

5-2010

IL-2 REGULATION OF IL-24 EXPRESSION LEADS TO GROWTH SUPPRESSION OF MELANOMA CELLS

Emily Jen

Follow this and additional works at: http://digitalcommons.library.tmc.edu/utgsbs_dissertations

 Part of the [Medical Cell Biology Commons](#), and the [Oncology Commons](#)

Recommended Citation

Jen, Emily, "IL-2 REGULATION OF IL-24 EXPRESSION LEADS TO GROWTH SUPPRESSION OF MELANOMA CELLS" (2010). *UT GSBS Dissertations and Theses (Open Access)*. 32.
http://digitalcommons.library.tmc.edu/utgsbs_dissertations/32

This Dissertation (PhD) is brought to you for free and open access by the Graduate School of Biomedical Sciences at DigitalCommons@TMC. It has been accepted for inclusion in UT GSBS Dissertations and Theses (Open Access) by an authorized administrator of DigitalCommons@TMC. For more information, please contact laurel.sanders@library.tmc.edu.

IL-2 REGULATES IL-24 PROTEIN EXPRESSION
LEADING TO GROWTH SUPPRESSION OF MELANOMA

by

Emily Yea-Chian Jen, B.S.

APPROVED:

Dr. Elizabeth A. Grimm, Ph.D.
Supervisory Professor

Dr. Russell R. Broaddus, M.D., Ph.D.

Dr. Nancy J. Poindexter, Ph.D.

Dr. Victoria P. Knutson, Ph.D.

Dr. Alexander J. F. Lazar, M.D., Ph.D.

APPROVED:

Dr. George M. Stancel, Ph.D.,
Dean, The University of Texas Health Science Center at Houston
Graduate School of Biomedical Sciences

IL-2 REGULATES IL-24 PROTEIN EXPRESSION
LEADING TO GROWTH SUPPRESSION OF MELANOMA

A

DISSERTATION

Presented to the Faculty of

The University of Texas
Health Science Center at Houston
and
The University of Texas
M. D. Anderson Cancer Center
Graduate School of Biomedical Sciences

in Partial Fulfillment

of the Requirements

for the Degree of

DOCTOR OF PHILOSOPHY

by

Emily Yea-Chian Jen, B.S.

Houston, Texas

May 2010

Dedication

For my mother

Everything I am and everything I will be is because of you.

Thank you for the years of support and encouragement. There is no way
to repay you for all you have done for me.

Acknowledgments

I would like to thank Dr. Elizabeth Grimm for her continual support and assistance throughout graduate school. She is a wonderful role model both as a mentor and as a scientist. Thank you to Dr. Nancy Poindexter for her guidance, for teaching and encouraging me, and for getting me started in the right direction. I would also like to thank Dr. Russell Broaddus and Dr. Victoria Knutson for serving on all of my committees and for making time to chat about science and anything else that came to mind, and Dr. Alexander Lazar for all of his suggestions and for trying to get me to draw – I know it will come in handy. Thank you to Dr. Suhendan Ekmekcioglu for her friendship and for the advice, work-related or otherwise. Thanks to Dr. Julie Ellerhorst for all the help and scientific discussions. Thanks also to Deon Uffort, Dr. Vicky Greene, Dr. Elizabeth Farnsworth, Dr. Yong Qin, Dr. Chandrani Chattopadhyay, and Abdul Gabisi for all of your support, and for keeping me fed and caffeinated, making sure I made it to the end mostly in one piece. And, thanks to Sandra Kinney, Marilyn Johnson, and Carolyn Cooke for all the hugs. Many thanks to Alcena Doxley and Pearl Coleman for helping me with all the things that had to be done along the way. I am grateful for the National Institutes of Health Center for Clinical and Translational Science (CCTS) T32 Training Award which supported me through part of my work.

IL-2 REGULATES IL-24 PROTEIN EXPRESSION
LEADING TO GROWTH SUPPRESSION OF MELANOMA

Publication No. _____

Emily Yea-Chian Jen

Supervisory Professor: Elizabeth A. Grimm, Ph.D.

(350 word limit)

Melanoma is known to be highly resistant to chemotherapy. Treatment with high dose IL-2 has shown significant clinical benefit in a minority of metastatic melanoma patients and has led to long term survival in a few cases. However, this treatment is associated with excessive multiorgan toxicities, which severely limits its use. We hypothesize that one mechanism of effective IL-2 therapy is through the direct upregulation of IL-24 production in melanoma tumors and subsequent IL-24 mediated tumor growth suppression.

Five melanoma cell lines were treated with high dose recombinant hIL-2 at 1000U/ml. Three of the cell lines (A375, WM1341, WM793) showed statistically significant increases in their levels of IL-24 protein when measured by Western blotting, while the remaining two lines (WM35, MeWo) remained negative for IL-24 message and protein. This increase in IL-24 was abolished by either preincubating with an anti-IL-2 antibody or by blocking the IL-2 receptor directly with antibodies against the receptor chains. We also demonstrated by ELISA that these three cell lines secrete IL-24 protein

in higher amounts when stimulated with IL-2 than do untreated cells. These cells were found to contain IL-2R beta and gamma message by RT-PCR and also expressed higher levels of IL-24 when treated with IL-15, which shares the IL-2R beta chain. Thus we propose that IL-2 is signaling through IL-2R beta on some melanoma cells to upregulate IL-24 protein expression. To address the biological function of IL-2 in melanoma cells, five cell lines were treated with IL-2 and cell viability determined. Cell growth was found to be significantly decreased by day 4 in the IL-24 positive cell lines while no effect on growth was seen in WM35 or MeWo. Incubating the cells with anti-IL-24 antibody or transfecting with IL-24 siRNA effectively negated the growth suppression seen with IL-2. These data support our hypothesis that in addition to its immunotherapeutic effects, IL-2 also acts directly on some melanoma tumors and that the IL-24 and IL-2R beta status of a tumor may be useful in predicting patient response to high dose IL-2.

Table of Contents

- i. Approval
- ii. Title
- iii. Dedication
- iv. Acknowledgements
- v. Abstract
- x. List of Illustrations
- xii. List of Tables
- xiii. Abbreviations

Introduction

Skin Cancer and Melanoma	1
Melanoma and Immunity	5
Interleukin-2 and the IL-2 Receptor Complex	5
High Dose Interleukin-2 (IL-2) as an Immunotherapy for Metastatic Melanoma	8
Interleukin-24/melanoma differentiation associated gene-7	9
Preliminary data and rationale for hypothesis	13

Materials and Methods

Cell lines and cell culture	15
Charcoal stripped fetal bovine serum	15
Reagents	16

Whole cell extracts and Western blotting analysis	16
Detection of secreted IL-24 protein	17
RNA isolation	18
Real Time Quantitative – RT-PCR Probe based assay	18
Growth suppression assay	21
siRNA assay	23
Statistical analysis	23

Results

IL-24 message is present in some melanoma cells	24
Basal IL-24 levels in melanoma cells are affected by serum components ...	27
IL-2 upregulates IL-24 protein production and secretion in 3/5 melanoma cell lines	29
Melanoma cells have IL-2R mRNA	35
IL-15 upregulates IL-24 expression in melanoma cell lines	39
IL-2 causes growth suppression in some melanoma cells	41
IL-2 mediated growth suppression is dependent on IL-24	42
IL-15 causes growth suppression in A375 cells	49
Serum levels of IL-24 in high dose IL-2 patients	51

Discussion

IL-2 upregulates IL-24 protein expression leading to growth suppression in melanoma cells	53
Additional support for IL-24 as a predictive marker for response to IL-2 ...	61

IL-2R β or IL-15R α coexistence with IL-24 as a predictive marker for response to IL-2 therapy.....	63
Support for IL-15 as therapy for metastatic melanoma	64
Mechanism of IL-2 dependent IL-24 Upregulation in Melanoma	
Cell Lines	65
Conclusions	66
Reference List	68
Vita	100

List of Illustrations

1.	Figure 1. Increased incidence of melanoma in individuals >45 years of age.	3
2.	Figure 2. IL-2 receptor signaling	7
3.	Figure 3. IL-24 associated pathways in cancer cell apoptosis	12
4.	Figure 4. Some melanoma cell lines have message for IL-24	26
5.	Figure 5. Charcoal stripped FBS media decreases background levels of IL-24	28
6.	Figure 6. High dose IL-2 upregulates IL-24 expression in some melanoma cells	32
7.	Figure 7. IL-24 is secreted by some melanoma cells	33
8.	Figure 8. IL-2 upregulation of IL-24 can be neutralized with anti-IL-2 antibody	34
9.	Figure 9. IL-2R β and IL-2R γ chain mRNA is present in melanoma cell lines	37
10.	Figure 10. IL-2 mediated IL-24 production is abolished by blocking the IL-2R	38
11.	Figure 11. IL-15 upregulates IL-24 expression in some melanoma cells	40
12.	Figure 12. Effects of IL-2 on melanoma cell growth by Trypan blue assay	44-47
13.	Figure 13. IL-24 siRNA effectively knocks down IL-24 mRNA in melanoma cell lines	48

- 14.** Figure 14. IL-15 causes growth suppression in A375 cells by 50
day 4
- 15.** Figure 15. Proposed novel mechanism for IL-2 direct effects on 55
melanoma: IL-24 dependent IL-2 mediated growth suppression in
melanoma cells

List of Tables

1.	Table 1 – Simplified AJCC 2009 Melanoma Staging and Classification	4
2.	Table 2 – IL-24 and IL-2R chain PCR primers and efficiency	22
3.	Table 3 – Human melanoma cell line descriptions	25

Abbreviations

ADCC	Antibody dependent cell mediated cytotoxicity
BSA	Bovine Serum Albumin
CSFBS	Charcoal stripped fetal bovine serum
ELISA	Enzyme-linked immunosorbent assay
FACS	Fluorescence activated cell sorting
FBS	Fetal Bovine Serum
HEPES	4-(2-hydroxyethyl)-1-piperazineethanesulfonic acid
HRP	Horse Radish Peroxidase
Ig	Immunoglobulin
IL-x	Interleukin-x
IL-2R	Interleukin-2 receptor
LAK	Lymphokine activated killer
LPS	Lipopolysaccharide
mRNA	Messenger ribonucleic acid
MTT	3-(4,5-Dimethylthiazol-2-yl)-2,5-diphenyltetrazolium bromide
PBMC	Peripheral blood mononuclear cells
PBS	Phosphate Buffered Saline
PHA	Phytohemagglutinin
RPMI	Roswell Park Memorial Institute medium
RT-PCR	Reverse transcriptase polymerase chain reaction
SDS-PAGE	Sodium Dodecyl Sulfate-Polyacrylamide Gel Electrophoresis
siRNA	Short-interfering RNA

Introduction

Skin Cancer and Melanoma

Skin cancer is the most common type of all cancers, and melanoma is its deadliest form. Although melanoma accounts for less than 5 percent of total skin cancers, it caused about 75 percent of all skin cancer deaths last year. While the incidence of many other prevalent cancers has decreased in recent years, the incidence of malignant melanoma is steadily rising (Figure 1) [1, 2]. The number of new melanoma cases each year is increasing faster than many other cancers in the United States, and in Australia new cases of melanoma exceeded new cases of lung cancer for the first time in 2008. Although it receives little attention, melanoma is a very serious cancer problem. There were an estimated 68,720 new cases of melanoma (39,080 men and 29,640 women) and more than 8,650 melanoma deaths in the United States in 2009 [3] (NCI SEER Cancer Statistics Review, 2009). According to the American Cancer Society, the mortality rate for melanoma has increased by close to 50 percent since the early 1970s, and while surgical resection can be curative in the very early stages of disease, melanoma demonstrates extremely aggressive growth characteristics. The prognosis for patients with metastatic melanoma remains extremely poor. Median survival for stage III melanoma patients is around 24 months. Stage IV patient survival ranges from 6 to 8 months from the time of diagnosis, with 5-year survival rates of less than 4 percent [4, 5]. Because melanoma can strike early in life, it ranks among the top 5 malignancies in terms of years of potential life lost. Between 2002-2006, the median age at diagnosis for melanoma was 59 years of age, and greater than 40 percent of the cases diagnosed were in patients younger than 55. Melanoma is the most commonly occurring cancer in women aged

25-29 years, and it is second only to breast cancer in women aged 30-34 years [6]. Median age at death for melanoma between 2002-2006 was 68 years of age.

Cutaneous melanomas develop from melanocytes, the cells responsible for generating melanin in the skin. Melanocytes originate from multipotent neural crest cells, which give rise to numerous types of cells including neurons and glial cells, among others [7, 8]. During development, melanocyte precursors migrate from the neural crest to several locations within the body including the basal layer of the skin, hair, inner ear, uveal tract in the eye, and leptomeninges in the brain [9]. Any of these locations can become the site of a primary tumor. When melanoma metastasizes, the most common site is a lymph node closest to the primary tumor. Other common sites of metastasis include the skin, lungs, liver, brain, and bone. In patients with Stage I and II melanoma (local disease), significant beneficial prognostic factors include female sex, age >65 years, lesions on the extremities, tumor thickness of <0.1mm, and lack of ulceration. The most recent American Joint Committee on Cancer findings add mitotic rate (defined histologically as the number of mitoses/mm²) as a prognostic factor (American Joint Committee on Cancer: AJCC Cancer Staging Manual, Seventh Edition;[10]). In Stage III disease (regional metastasis), smaller tumor burden and fewer involved lymph nodes were also significant beneficial factors.

Melanoma of the Skin SEER Incidence 1994-1996 vs 2004-2006 White, by Age and Sex

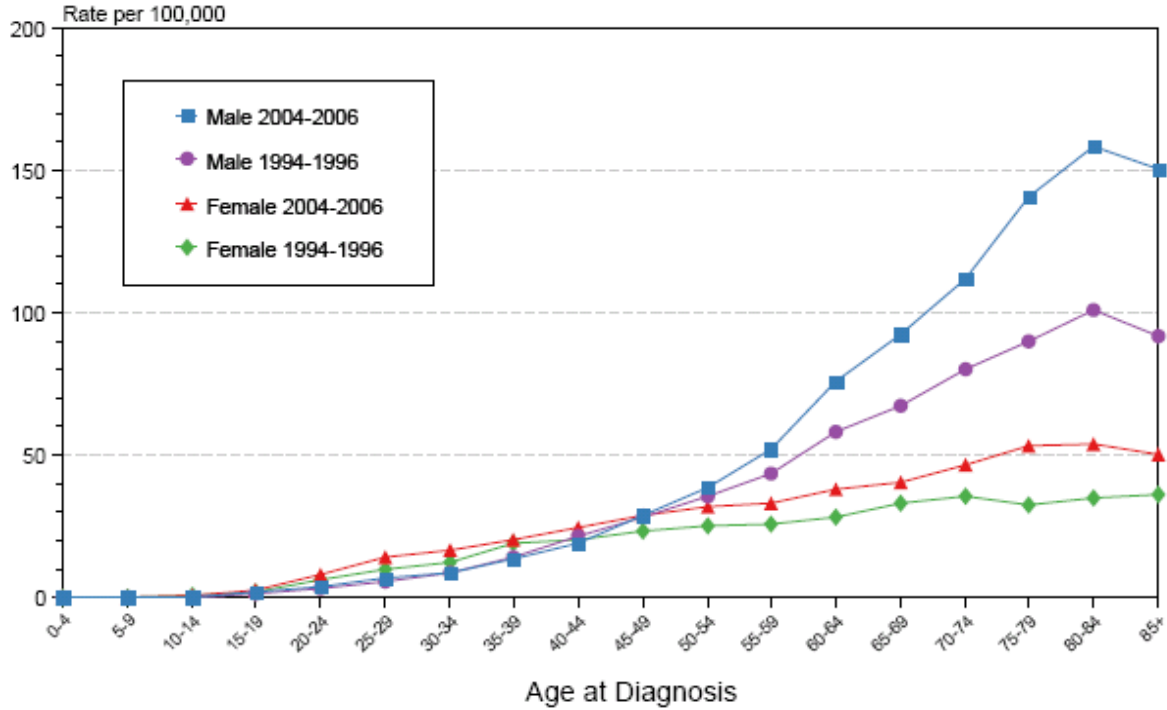


Figure 1. Increased incidence of melanoma in individuals >45 years of age. Comparison of three-year melanoma incidence between 1994 – 1996 and 2004 – 2006 grouped by gender. SEER Cancer Statistics Review 1975 – 2006, National Cancer Institute, 2008. Downloaded 04/2010 from http://seer.cancer.gov/csr/1975_2007/browse_csr.php?section=16&page=sect_16_zfig.03.html

Table 1. Simplified AJCC 2009 Melanoma Staging and Classification

I	Primary 1.0 mm or less with or without ulceration and with or without mitoses $\geq 1/\text{mm}^2$, or primary 1.01 - 2.0 mm without ulceration, no lymph node or distant metastases
II	Primary 1.01 - 2.0 mm with ulceration, or primary > 2.01 mm with or without ulceration, no lymph node or distant metastases
III	Lymph node metastasis, or in-transit metastases/satellites, no distant metastases
IV	Distant metastases

Included with permission to reprint data from Journal of Clinical Oncology (10), License Number 2416810139111.

Melanoma and Immunity

Melanoma is notoriously resistant to both radiation therapy and cytotoxic chemotherapies. Treatment modalities for metastatic melanoma have included surgery, radiotherapy, chemotherapy, biologic therapy, hyperthermia limb perfusion, and intralesional immunotherapy. Treatment with chemotherapy, either alone or in combination with other chemotherapies, has resulted largely in only partial or nondurable responses in metastatic disease [11]. Throughout the course of treating patients, clinicians observed some interesting characteristics of the disease including spontaneous regression of primary lesions [12, 13] as well as disseminated disease, the presence of T cell infiltrates in early lesions, and the existence of a shared melanoma differentiation antigen in melanoma and vitiligo, an autoimmune skin disorder [14-16]. In fact, the presence of *de novo* vitiligo in patients with melanoma correlated with a better prognosis and response to immunotherapeutic tumor treatment; this was also true if patients had other coexisting autoimmune states such as autoimmune thyroid dysfunction [17-20]. This clinically evident relationship between the natural history of melanoma and immunity led to the suggestion that combining traditional chemotherapy with cytokine immunotherapy might yield cumulative immune and direct antitumor effects.

Interleukin-2 and the IL-2 receptor complex

Cytokines are protein molecules that are involved in regulating the immune response. Interleukin-2 was originally called T-cell growth factor based on its capacity to promote long-term proliferation of T cells grown in culture [21]. IL-2 is a member of a family of cytokines that includes IL-4, IL-7, IL-9, IL-15, and IL-21. It mediates its effects by signaling

through the IL-2 receptor complex (Figure 2). This complex consists of three chains – the IL-2R α chain (CD25) which is specific for IL-2, the IL-2R β chain (CD122), and the common γ chain (CD132, γ c), which is shared by all members of this family of cytokines. IL-2R α serves to stabilize the interaction between IL-2 and its receptor but is not involved in signal transduction. All three chains combine to form a high affinity receptor complex, while IL-2R β and IL-2R γ together form an intermediate affinity receptor. Binding of IL-2 to its receptor activates the Ras/MAPK, JAK/Stat, and PI 3-kinase/Akt signaling pathways. IL-2 is typically produced by the body during an immune response to foreign molecules or microbes [22, 23]. Foreign antigens bind to T cell receptors triggering the secretion of IL-2 and the expression of IL-2 receptor. IL-2 interaction with its receptor stimulates growth, differentiation and survival of antigen specific cytotoxic T cells by activating expression of specific genes [24, 25]. Therefore, IL-2 is essential for the development of T cell immunologic memory. IL-2 is also important during the development of T cells in the thymus; it is involved in the maturation of a subset of T cells called regulatory T cells or T-regs [26, 27]. After leaving the thymus, T-regs prevent other T cells from recognizing and responding to self antigens and leading to an autoimmune state. T-regs accomplish this by preventing other T cells from producing IL-2. Consequently, IL-2 is required to discriminate between self and non-self.

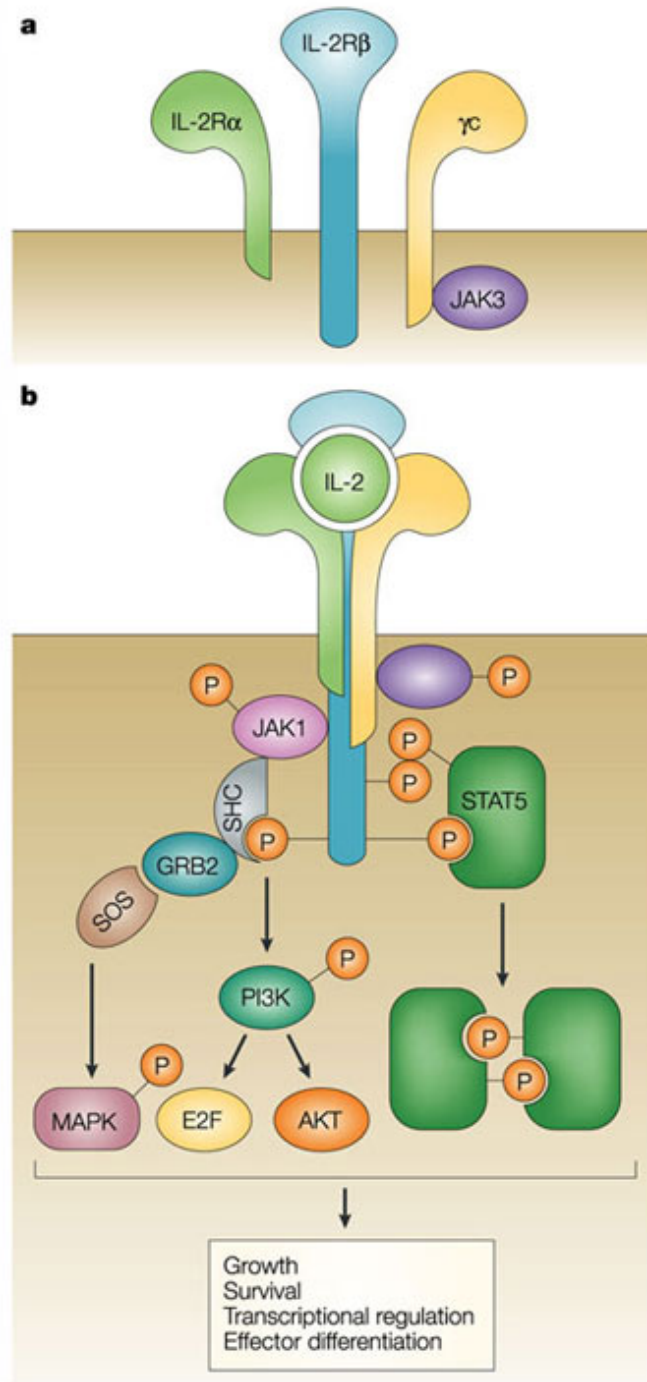


Figure 2. IL-2 receptor signaling. A. The high affinity IL-2 receptor is made up of three subunits - α , β , and γ . B. Binding of IL-2 to its receptor leads to signal transduction via Ras/MAPK, JAK/Stat and PI 3-kinase/Akt. Malek *et al.* Nature Reviews Immunology, 4, 665-674, Sept. 2004. Included with permission to reprint from Nature Publishing Group, License Number 2416781462303.

High Dose IL-2 as Immunotherapy for Metastatic Melanoma

The most promising adjuvant immunotherapy results in metastatic melanoma patients thus far have been observed with high dose bolus recombinant human IL-2 treatment, which has been shown to have significant clinical benefits and produce long term survival in a minority of patients [28-32]. IL-2 is a major regulator of the immune system, and is therefore a good contender to stimulate the immune system against cancer. It has also been shown to be effect in some patients with renal cell carcinoma [33-35]. Objective responses have been observed in 15% to 20% of melanoma patients, with 6% to 8% of patients achieving complete durable responses [36, 37]. Approximately 60% of patients who attain complete remission survive for more than 10 years. High dose IL-2 therapy is currently being utilized here at M. D. Anderson Cancer Center both alone and in combination with various chemotherapeutic regiments to treat patients with advanced metastatic disease. In initial trials, high dose IL-2 was given intravenously at 600,000 to 720,000 IU/kg every eight hours on days 1 to 5 and 15 to 19 with a maximum of 28 doses per course [38, 39]. IL-2 antitumor activity is thought to be mediated by activation of natural killer cells (NK) to lymphokine activated killer cells (LAK) [40-42], in essence enhancing the patient's immune system activity against melanoma.

However, high dose IL-2 therapy is associated with capillary leak syndrome (also commonly called vascular leak syndrome) resulting in severe vascular hypotension and extensive multiorgan toxicity, including renal, hepatic, and cardiac [43-47]. It also causes arrhythmias and fluid accumulation in the lungs. These highly toxic side effects severely limit its use to patients with healthier organ function and performance status, and thus it remains an obstacle to widespread treatment with IL-2. Only 6-8 % of patients benefit from

this treatment and we cannot predict who they are prior to applying a costly and toxic therapy. In addition, hospitalization is required for the duration of treatment, and because of the specialized monitoring and support services necessary to administer high dose IL-2 therapy this treatment is only offered at a limited number of centers. As of yet, there is no reliable marker to identify the melanoma patients who are most likely to respond positively to IL-2 therapy. Identification of such a marker is essential in order to effectively treat these patients.

Interleukin-24/melanoma differentiation associated gene-7

IL-24, initially called melanoma differentiation associated gene-7 (mda-7), is a unique multifunctional cytokine belonging to the IL-10 family [48, 49]. The mda-7 gene was identified by subtraction hybridization from a melanoma cell line that was induced to differentiate with IFN- β and then stabilized by mezerin [50]. IL-24 was initially thought to be a transcription factor because it appeared to be localized in the nucleus [51]. However since sequence analysis showed a limited homology to IL-10, and IL-24 functions in an immune regulatory loop by stimulating monocyte production of a pro-Th-1 cytokine cascade (49), IL-24 was ultimately classified as a Th1 cytokine. IL-24 receptors were shown to consist of the class II heterodimeric receptors of IL-22R1/IL-20R2 and IL-20R1/IL-20R2 [52]. These receptors have been shown to be expressed primarily in the skin where they are present on keratinocytes [53, 54], but can also be found on endothelial cells, lung, testis, ovarian cells, as well as some cancer cells including melanoma [55]. In normal cells, endogenous IL-24 expression is limited to immune cells, including monocytes and stimulated T-cells, and skin cells including keratinocytes and melanocytes [48, 56-59]. Our laboratory

has shown that IL-24 protein is expressed by nevi and primary melanoma tumors. This protein expression is subsequently lost during melanoma tumor invasion and progression and is often undetectable in advanced metastatic disease [60-62]. IL-24 has also been shown to cause growth suppression and apoptosis specifically in tumor cells both *in vitro* and *in vivo*, including lung, pancreatic, and breast cancer cells, while demonstrating no apparent toxicity to normal cells [63-65] (Figure 3). Data from our laboratory further demonstrates the cytotoxicity of IL-24 to human melanoma cell lines. These data are all consistent with the tumor suppressor functions attributed to IL-24 [66]. A replication incompetent adenovirus expressing the *mda-7* gene construct (Ad.*mda-7*; INGN 241) has been used in many studies to further elucidate the biological effects of IL-24. IL-24 has been observed *in vitro* and *in vivo* to possess certain anti-angiogenic properties [67, 68]. Human lung tumors treated with adenoviral *mda-7* had decreased tumor vascularization when compared to control tumors [64]. IL-24 protein has been shown to selectively inhibit endothelial cell differentiation, exhibiting direct anti-angiogenic actions [69]. In addition, IL-24 secreted by normal human prostate cells treated with Ad.*mda-7* also inhibited the invasion of cancer cells that express the IL-24 receptors [70]. IL-24 causes a G2/M block by increasing the accumulation of melanoma cell lines in S phase *in-vitro*, as well as having an anti-proliferative affect [71]. It also has been shown in glioma [72], prostate and ovarian carcinoma [73, 74], breast cancer [75], and non-small cell lung cancer [76, 77] that IL-24 generation of reactive oxygen species had a radiosensitization effect on those cells.

Accordingly, IL-24 appears to act as a tumor suppressor in melanoma and other cancers by a variety of mechanisms, and is currently being studied in clinical trials for its potential therapeutic usefulness. In addition to its direct tumor suppressive effects, several

studies confirm a bystander effect of the secreted protein from *Ad.mda-7* gene therapy (55) such that IL-24 secreted from *Ad.mda-7* transfected cells was shown to induce cell death in non-transfected tumor cells. The *Ad.mda-7* gene construct has been used in Phase I/II gene therapy clinical trials [56, 78-80] through intratumoral injection of the *Ad.mda-7* construct [78, 79]. In the phase I/II clinical trials IL-24 was well tolerated and showed considerable apoptotic activity in injected lesions [78, 81-83]. Clinically significant responses including tumor regression were found with repeat injections.

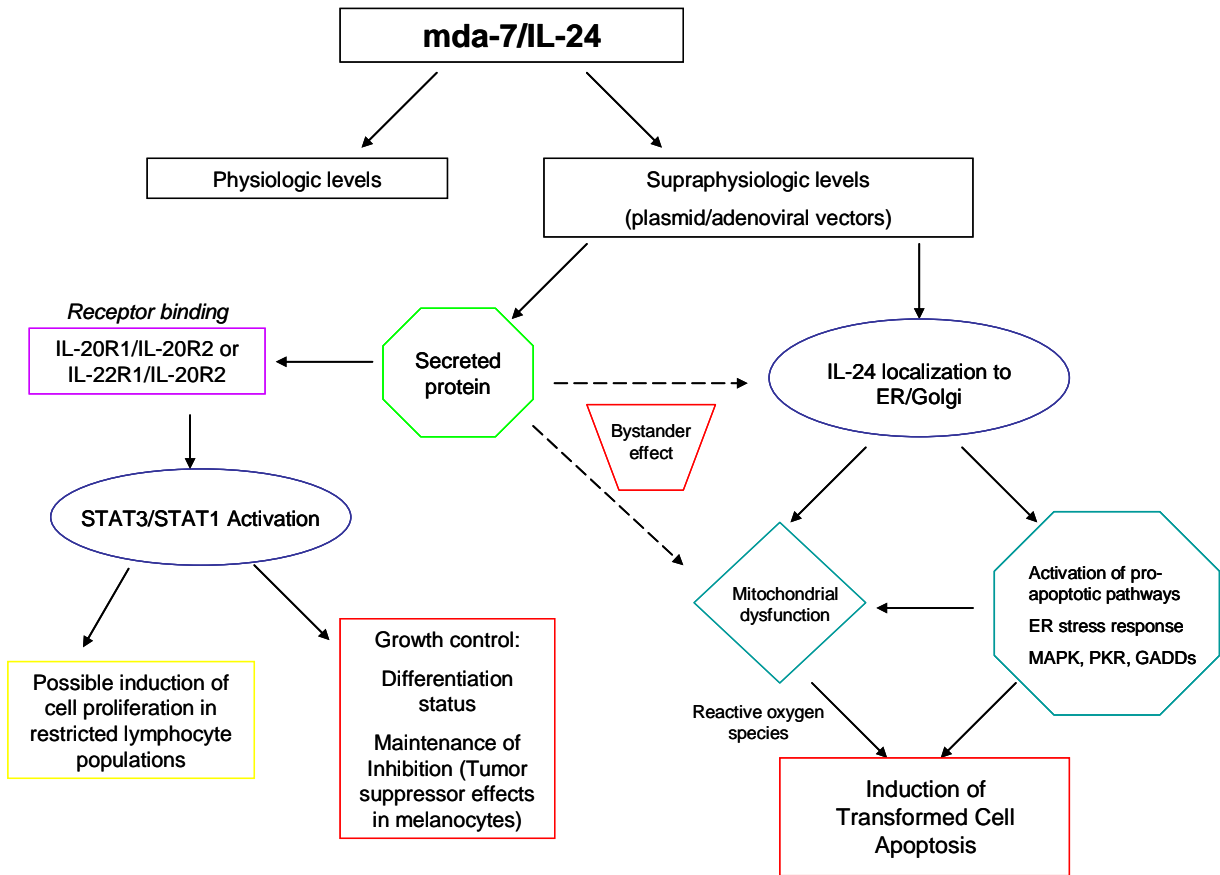


Figure 3. IL-24 associated pathways in cancer cell apoptosis. Summary of signaling pathways related to IL-24 activity.

Preliminary data and Rationale for Hypothesis

Preliminary data from our laboratory revealed by FACS analysis that stimulation of A375, a melanoma cell line, with high doses of IL-2 resulted in endogenous production of IL-24 in a dose dependent manner (data not shown). However, another melanoma cell line, MeWo, did not show any upregulation of IL-24 following IL-2 treatment. Subsequently, three out of five melanoma cell lines analyzed showed an increase in IL-24 protein production and secretion of IL-24 in response to treatment with high dose IL-2. Our laboratory has published *in vitro* data in normal peripheral blood mononuclear cells (PBMC) that show that PHA stimulation results in IL-2 secretion; this appears to stabilize IL-24 mRNA resulting in increased protein production [84]. It is possible that this mechanism also occurs in melanoma cells. These observations seemed to suggest that there may exist a mechanism by which IL-2 acts directly on the melanoma cells in responsive patients instead of solely mediating its effects through the immune system.

Given these data, we propose that one mechanism by which high dose IL-2 is able to generate a durable response in these patients is through direct activation via the IL-2 receptor on melanoma cells of IL-24 mediated tumor growth suppression or apoptosis. Several articles in the literature report that IL-2 receptor chains are present on the surfaces of both human and murine cutaneous melanoma cells [85-90]. IL-2R β in particular has been identified in a number of cancer cell lines including small cell lung cancer and squamous cell carcinoma of the head and neck [91, 92], and melanoma. The mechanisms of IL-24 antitumor growth effects have been extensively studied by several groups. Based on this, we hypothesize that a subset of patients whose melanoma cells express IL-24 and IL-2 receptor will have a better response to IL-2 therapy due to IL-24 mediated growth control, and thus

expression of IL-24 and IL-2R may be useful as potential positive predictive markers to identify patients who are suitable candidates for IL-2 therapy. With this approach to treatment, therapy can then be targeted to the specific patients who will respond, while the patients who are unlikely to gain any benefits from IL-2 therapy will be spared its toxicity and can be directed to alternative treatments. Thus, we seek to improve the quality of life for melanoma patients. We hope that in identifying a potential predictive marker, this project will provide a prognostic test for the therapeutic efficacy of IL-2 therapy in melanoma patients.

The goal of this project was to mimic the conditions present in high dose IL-2 patients during therapy. Those patients receive approximately 600,000-720,000 IU/kg per dose every 8 hours infused intravenously over 15-20 minutes on days 1 to 5 and 15 to 19 with a maximum of 28 doses per course [93, 94]. A study was performed examining different cytokine levels in patients' serum at various time points during high dose IL-2 therapy. It showed that peak IL-2 levels in the serum of these patients averaged around 4000 U/ml and remained well above 1000 U/ml after the 4th dose [95, 96]. Based on these data, we feel confident that 1000U/ml is a reasonable conservative dose at which to test the effects of high dose IL-2 on melanoma cells.

Materials and Methods

Cell lines and cell culture

We obtained two human metastatic melanoma cell lines, A375 and MeWo, from the American Type Culture Collection (Rockville, MD). The WM1341, WM793, and WM35 human primary melanoma cell lines were developed by Dr. Meenhard Herlyn (Wistar Institute, Philadelphia, PA) [97] and were obtained from Dr. Robert Kerbel (University of Toronto, Toronto, Ontario, Canada) [98, 99]. All melanoma cell lines used were maintained in RPMI 1640 medium supplemented with 100 U/mL of penicillin, 100 mg/mL of streptomycin, 2 mM L-glutamine, and HEPES buffer with 4% fetal bovine serum (all purchased from Life Technologies, Inc., Grand Island, NY). Experiments were run in supplemented RPMI with 2% charcoal stripped FBS (description below) unless otherwise indicated.

Charcoal stripped fetal bovine serum

Fetal bovine serum (Life Technologies, Inc) was charcoal stripped to remove endogenous hormones and steroids and reduce any background levels of IL-24 in cell lines grown in serum caused by nonspecific activation from serum components. This was achieved by incubating the serum overnight at 4 degrees C with a mixture of charcoal, dextran, sucrose, magnesium chloride, and HEPES buffer from Sigma-Aldrich (St. Louis, MO) following the manufacture's protocol.

Reagents

IL-2 was obtained from Chiron (formerly Cetus) (Emeryville, CA). IL-2 was used at 1000 U/ml in all experiments described for this publication unless otherwise noted. IL-2 has an initial rapid redistribution phase half-life of approximately 13 minutes followed by a slower elimination phase half-life of 85 minutes in serum. As discussed in the introduction, the goal of this project was to mimic the conditions present in high dose IL-2 patients during therapy. Studies of high dose IL-2 patient serum showed that peak IL-2 levels in the serum averaged around 4000 U/ml and remained well above 1000 U/ml after the 4th dose [95, 96]. Based on these data, we feel confident that 1000U/ml is a reasonable conservative dose at which to test the effects of high dose IL-2 on melanoma cells. IL-15 was purchased from eBioscience (San Diego, CA). 7G11, an anti-IL-24 mouse monoclonal antibody (Introgen Therapeutics, Houston, TX), was used for Western blotting and for blocking IL-24 during growth assays. Mouse anti-human IL-2 monoclonal antibodies were purchased from BD BioSciences (San Jose, CA). Anti-IL-2 receptor (IL-2R α , IL-2R β , and IL-2R γ) antibodies were purchased from R&D Systems (Minneapolis, MN). Preimmune normal mouse IgG (Sigma-Aldrich, St. Louis, MO) was used as a negative control for receptor blocking studies. Anti-actin antibody from Santa Cruz Biotechnology (Santa Cruz, CA) was used as a standard loading control for all Western blot staining. Lipopolysaccharide (LPS) was purchased from Sigma-Aldrich (St. Louis, MO).

Whole cell extracts and Western blotting analysis

Cells were treated with brefeldin A (Sigma-Aldrich, St. Louis, MO) at 10ug/ml four hours prior to harvesting, washed with cold PBS, and subsequently harvested into PBS. Cell

pellets were then resuspended in protein lysis buffer (140 mM NaCl, 25 mM Tris HCl pH 7.4, and 1% NP-40) with fresh protease inhibitor cocktail (BD Biosciences, San Jose, CA). The supernatants were collected after agitation and protein concentration was measured by Bradford Assay (BioRad). Proteins were separated by SDS-PAGE, transferred to a nitrocellulose membrane (Amersham-Hybond ECL – GE Healthcare, Piscataway, NJ), and blocked for 1 hour in 5% nonfat milk in PBS. Primary antibody was diluted in 5% nonfat dry milk/PBS/ 0.1% Tween and incubated overnight at 4°C. This was followed by a 45 minute incubation with an appropriate horseradish peroxidase labeled secondary antibody, also diluted in 5% nonfat dry milk/PBS/ 0.1% Tween. Membranes were then developed with enhanced chemiluminescence reagents (Amersham Pharmacia Biotech, Piscataway, NJ). Western blot band protein quantification was performed using densitometry analysis with Scion Image software (Scion Corporation). Differences in protein levels between treatment conditions were determined by normalizing test proteins to beta-actin controls within each sample.

Detection of secreted IL-24 protein

Melanoma cells were plated at 1×10^6 cells/mL and cultured in supplemented RPMI-1640 medium (Invitrogen, Carlsbad, CA) + 2% charcoal stripped FBS with IL-2 added at 1000U/ml. Supernatants were harvested at 24 hours and secreted IL-24 levels were determined with an ELISA test kit (R&D Systems, Inc., Minneapolis, MN) according to the manufacturer's protocol. Reference standards for the ELISA were resuspended in cell culture medium. The amounts of IL-24 were quantified based on a standard curve determined by means of optical density readings measured at 450 nm with a reference of 550 nm on an

ELISA plate reader (Dynex Technologies, Chantilly, VA). The mean values at each time point were then used directly for the analysis reported.

RNA Isolation

RNA extraction from melanoma cells was accomplished using the Qiagen RNAeasy mini kit protocol. Total RNA was extracted from melanoma cells by first lysing and homogenizing the tissue by passing the cells back and forth through a syringe and needle. Ethanol was added to the lysates, and the samples were applied to the RNAeasy spin columns. Total RNA was isolated following the manufacturers protocol (Qiagen, Valencia, CA). DNase I treatment was accomplished by adding RNase-free DNase I (Sigma-Aldrich, St. Louis, MO) to the samples, incubating at 37°C for 30 minutes, and then heating at 75°C for 10 minutes to disable the DNase I.

Real-Time Quantitative RT-PCR – Probe-based assay

Real-time qPCR assays were performed in the Quantitative Genomics Core Laboratory (QGCL) at The University of Texas Health Sciences Center in Houston, Texas. All real-time qPCR assays used in this publication were designed and validated by QGCL staff to ensure they pass the minimum requirements for efficiency, sensitivity and selectivity. Their protocol [100] follows:

“cDNA was synthesized in 5 μ l (384-well plate) total volume by the addition of 3 μ l/well RT master mix consisting of: 400 nM assay-specific reverse primer, 500 μ M deoxynucleotides, Superscript II buffer and 1 U/ μ l Superscript II reverse transcriptase (Invitrogen, Carlsbad, CA), to a 96-well plate (ISC Bioexpress, Kaysville, UT) or 384-well

plate (Applied Biosystems, Foster City, CA) and followed by a 2 μ l volume of sample (25 ng/ μ l). Each sample was assayed in triplicate plus a control without reverse transcriptase to assess DNA contamination levels. Each plate also contained an assay-specific sDNA (synthetic amplicon oligo) standard spanning a 5-log template concentration range and a no template PCR control, also put into RT master mix with reverse transcriptase. Each plate was covered with Biofilm A (Bio-Rad, Hercules, CA) and incubated in a PTC-100 (96) or DYAD (384) thermocycler (Bio-Rad, Hercules, CA) for 30 minutes at 50°C followed by 72°C for 10 min. PCR master mix, 15 μ l/well, was added directly to the 5 μ l RT volume. Final concentrations for the PCR were 400 nM forward and reverse primers (IDT, Coralville, IA), 100 nM fluorogenic probe (Biosearch Technologies, Novato, CA), 5 mM MgCl₂, and 200 μ M deoxynucleotides, PCR buffer, 150 nM SuperROX dye (Biosearch Technologies, Novato, CA) and 0.25 U JumpStart Taq polymerase per reaction (Invitrogen, Carlsbad, CA), final concentrations. RT master mixes and all RNA samples and DNA oligo standards were pipetted by a Tecan Genesis RSP 100 robotic workstation (Tecan US, Research Triangle Park, NC); PCR master mixes were pipetted utilizing a Biomek 2000 robotic workstation (Beckman, Fullerton, CA). Each assembled plate was then covered with optically clear film (Applied Biosystems, Foster City, CA) and run in a 7900 real-time instrument using the following cycling conditions: 95°C, 1 min; followed by 40 cycles of 95°C, 12 sec and 60°C, 30 sec. The resulting data were analyzed using SDS 2.3 (7900) software (Applied Biosystems, Foster City, CA) with FAM reporter and ROX as the reference dye.

Synthetic, PAGE purified DNA oligos used as standards (sDNA) encompassed at least the entire 5' – 3' amplicon for the assay (Sigma-Genosys, The Woodlands, TX). Each oligo standard was diluted in 100 ng/ μ l *E. coli* tRNA-H₂O (Roche Diagnostics, Indianapolis,

IN) and spanned a 5-log range in 10-fold decrements starting at 0.8 pg/reaction. It has been shown for several assays that *in vitro* transcribed RNA amplicon standards (sRNA) and sDNA standards have the same PCR efficiency when the reactions are performed as described above with PCR amplicons of less than 100 bases in length (G.L. Shipley, personal communication).

Due to the inherent inaccuracies in quantifying total RNA by absorbance, the amount of RNA added to an RT-PCR from each sample was more accurately determined by measuring the amount of at least one transcript that was invariant across all samples. The final data were normalized to b-actin. Due to the high abundance of the 3 ribosomal RNAs, a second set of samples diluted 1/500-fold was made in 100 ng/ μ l *E. coli* tRNA-H₂O for each sample. The final data are presented as the molecules of unknown transcript/molecules of normalizer transcript x 100 and expressed as the percent of the normalizer transcript. Unless otherwise stated, quantities for unknown samples were obtained from an internal standard curve run on each plate.

For Roche UPL probe-based or SYBR Green I dye-based assays, the dCt method was used for data analysis comparing test samples to an appropriate control ‘calibrator’ sample to determine a fold difference between the calibrator sample and the other unknown samples. It is necessary to validate the hits using a second assay. Validation is based on Roche UPL hydrolysis probe assays. The determination of PCR efficiency and lowest limit of detection (LOD) was performed using template from a PCR diluted 100-fold into 100 ng/ μ l *E. coli* tRNA-H₂O. Seven log₁₀ dilutions were made in diluent and a standard curve was produced using standard cycling conditions (see above for Taqman probes). From this curve, a PCR efficiency and LOD were determined.”

Growth suppression assays

Cells were plated at 5×10^5 cells per well in 24 well plates. Cells were serum starved overnight and then treated with RPMI + 2% charcoal stripped FBS with or without IL-2 at 1000U/ml and other indicated conditions at day 0. Each condition was performed in triplicate. Cells were then trypsinized and collected, and viable cells were counted using a 0.2% Trypan blue dye exclusion assay at days 2 through 6 to assess cell growth. Mean values were determined for each condition and used for analysis.

Table 2. IL-24 and IL-2R chain PCR primers and efficiency

<p>hIL-24 (IL-24)</p> <p>accession #: NM_006850</p>	<p>1484(+) AAGCAGATCCTCAATAAACATTTTC 1556(-) ACCAAGGGAAAGGGATGATG 1511(+) FAM-TCCCACCCACACTCGCCAGC-BHQ1 PCR amplicon length =77 bases Lowest limit of detection = 190 copies PCR efficiency = 98%</p>
<p>hIL-2Ra (IL2RA)</p> <p>accession #: NM_000417</p>	<p>1061(+) CTAAATGGTCGCCCAGGAG 1128(-) TGTGATGTGACTTCAGAGCTT 1081(+) FAM-CATCCGTTGTGCTTGCCTGCGT-BHQ1 PCR amplicon length = 90 bases Lowest limit of detection = 160 copies (RT-PCR) PCR efficiency = 99%</p>
<p>hIL-2Rb (IL2RB)</p> <p>accession #: NM_000878</p>	<p>2037(+) CTCCTCGTTAATCACAGGAT 2124(-) AGGACTGATATTGGTGAATAGCT 2068(+) FAM-TAGGCTCAGAAGCATCGCTCCTCT-BHQ1 PCR amplicon length = 90 bases Lowest limit of detection = 160 copies (RT-PCR) PCR efficiency = 99%</p>
<p>hIL-2Rg (IL2RG)</p> <p>accession #: NM_000206</p>	<p>380(+) CCACCTCTACCAAACATTTGTT 450(-) GCATCTGTGTGGCCTGTC 411(+) FAM-CAGGACCCACGGGAACCCAGG-BHQ1 PCR amplicon length = 80 bases Lowest limit of detection = 180 copies (RT-PCR) PCR efficiency = 99%</p>

siRNA Assay

For these experiments, siGENOME SMARTpool for human IL-24 and siGENOME Non-Targeting siRNA Pool were purchased from Dharmacon, Inc. (Chicago, IL). Oligofectamine was obtained from Invitrogen (Carlsbad, CA). Melanoma cells were serum starved overnight and then transfected with 2 nM IL-24 siRNA or control siRNA in OptiMEM media. Fresh RPMI + 4% FBS was added 4 hours after the transfection. Cells were transfected a second time 24 hours after the initial transfection and harvested 24 hours later. RNA was extracted and analyzed for IL-24 mRNA levels by RT-PCR. For growth suppression assays, supplemented RPMI + 2% CSFBS media and IL-2 were added 24 hours after the second transfection. This time point was designated day 0, and viable cells were counted at day 6 using the Trypan blue dye exclusion assay.

Statistical Analysis

We determined means and standard errors for each of the variables and used the Student's *t* test to evaluate the statistical significance of the experimental results. All experiments were performed at least three times unless otherwise indicated. Statistical significance was set at $P < 0.05$.

Results

IL-24 message is present in some melanoma cells

Melanoma tumors are not homogeneous assemblages of cells. It has been observed that IL-24 protein is expressed by many nevi and primary melanoma tumors. One group looked at IL-24 expression by immunohistochemistry in various tumors and found that 100% of normal melanocytes and benign nevi and 71% of primary melanomas tested were positive for IL-24. This protein expression is often subsequently lost during melanoma tumor invasion and progression and can be undetectable in advanced metastatic disease [101-103]. Only 35% of metastatic melanomas examined had IL-24. Given this heterogeneity among melanoma tumors we hypothesize that only some melanoma tumors and cell lines will have IL-24 message.

Five melanoma cell lines representing various stages of disease and mutation status (Table 3) were examined by RT-PCR for the presence of IL-24 message. A375, WM1341, and WM793 were shown to possess IL-24 message while WM35 and MeWo had very low or undetectable levels of IL-24 mRNA (Figure 4). Data was normalized to beta-actin mRNA levels.

Table 3. Human melanoma cell line descriptions

<u>Cell line</u>	<u>Source tissue</u>	<u>BRAF/NRAS Status</u>
A375	Skin metastasis	Mutant / wild type
WM1341	1° nodular melanoma, early stage	Wild type / mutant
WM793	1° superficial spreading melanoma, vertical growth phase, sternum, stage 1	Mutant / wild type
WM35	1° superficial spreading melanoma, scalp/neck, stage 1	Mutant / wild type
MeWo	Lymph node metastasis – late stage	Wild type / wild type

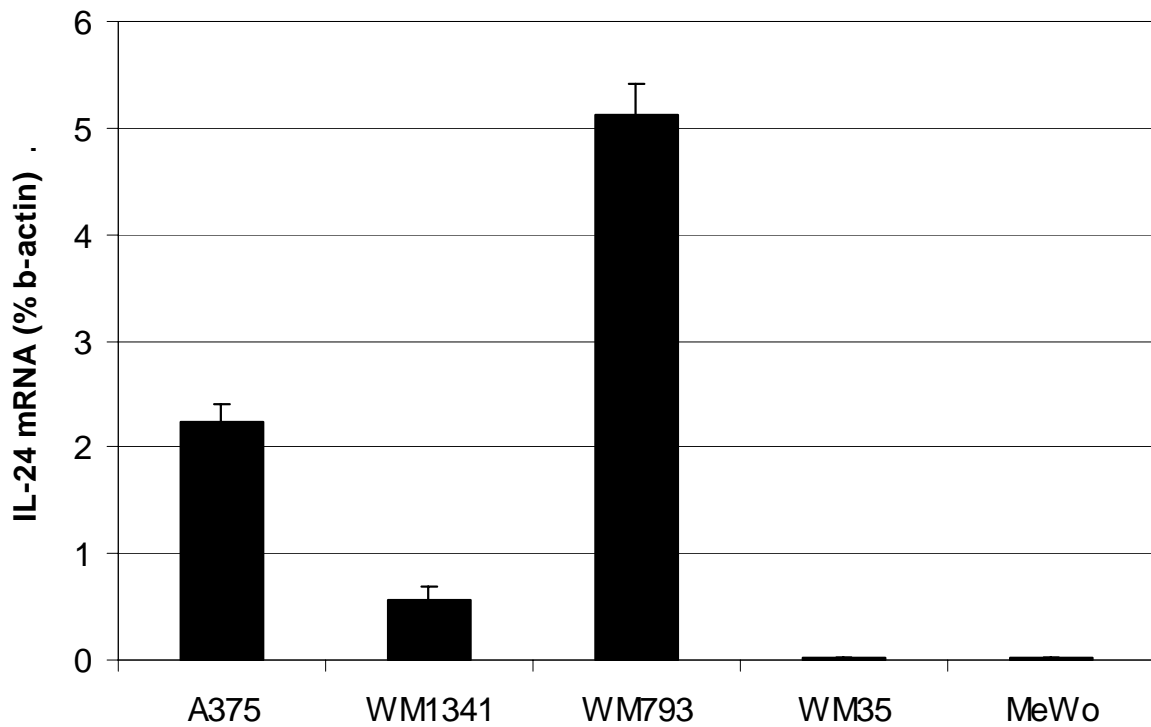


Figure 4. Some melanoma cells have message for IL-24. Cells were grown in FBS + 4% RPMI. Total RNA was extracted and analyzed for IL-24 mRNA by RT-PCR. Each sample was assayed in triplicate plus a control without reverse transcriptase to assess DNA contamination levels. Standard deviations are displayed above.

Basal IL-24 levels in melanoma cells are affected by serum components

To study the effects of cytokines *in vitro* it is often helpful to use charcoal stripping, an absorptive process, to minimize the presence of endogenous hormones, growth factors, and cytokines in serum. We hypothesized that any effects of treatment with IL-2 on IL-24 protein would be better exposed if background levels of IL-24 produced by cells, probably to some extent due to nonspecific activation from serum components, were decreased.

Melanoma cells grown in RPMI + 2% FBS were compared to those grown in RPMI + 2% charcoal stripped FBS. Those grown in charcoal stripped media exhibited significantly less background IL-24 than those grown in non-stripped media, and the effects of IL-2 treatment were more easily visualized (Figure 5). These melanoma cells are sensitive to components within the serum, and the decreased basal levels of IL-24 when grown in the charcoal stripped media allow for a better sense of the impact our treatments have on the cells.

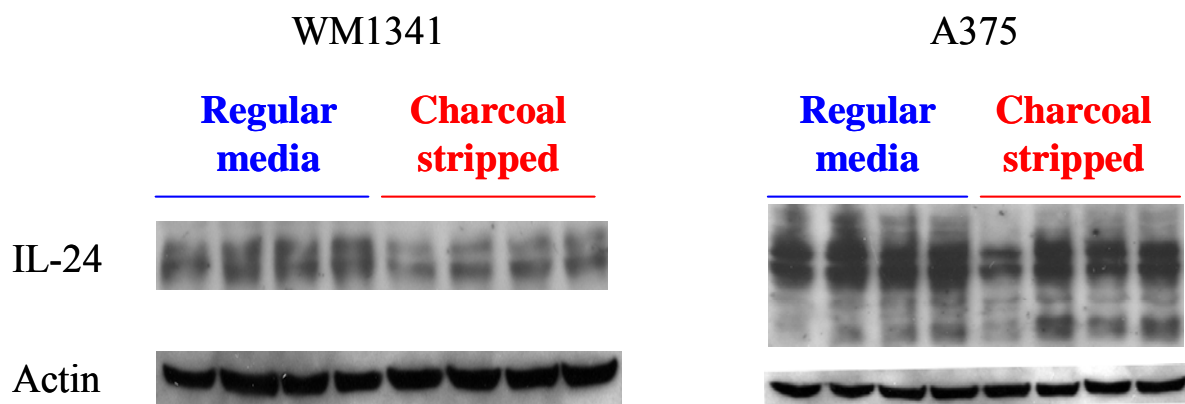


Figure 5. Charcoal stripped FBS media decreases background levels of IL-24. Cells were serum starved overnight and then grown for 24 hours in RPMI + 2% FBS or RPMI + 2% charcoal stripped FBS (CSFBS) under varying conditions. Brefeldin A was added 4 hours prior to harvesting the cells. Whole cell lysates were analyzed by Western blot for intracellular IL-24 and actin.

IL-2 upregulates IL-24 protein production and secretion in 3/5 melanoma cell lines

Our laboratory has published data that shows IL-2 stimulation triggers IL-24 production in PBMC [84]. Preliminary unpublished data showed by FACS analysis that IL-2 at high doses caused increased expression of IL-24 in A375 cells in a dose dependent manner, but no increase was seen in MeWo cells. We therefore hypothesized that in cell lines containing IL-24 mRNA, stimulation with IL-2 might also result in upregulation of IL-24 protein expression.

Melanoma cells were treated with high dose IL-2 at 1000U/ml in RPMI + 2% charcoal stripped FBS for 24 hours. It was discovered in early experiments that three of the cell lines actively secreted IL-24 protein, in some cases at levels high enough to be detected in the unconcentrated supernatant by Western blot analysis (data not shown). Therefore, in subsequent experiments all cells were treated with brefeldin A at 10ug/ml to prevent protein secretion for 4 hours prior to harvesting in order to better elucidate the levels of IL-24 being produced by our cells. LPS was used as a positive control since melanoma cells are known to respond via the Toll-Like Receptor-4 (TLR4); in monocytes and macrophages which express TLR4, IL-24 expression can also be induced by treatment with LPS [84]. Representative Western blots are shown here for the three responsive cell lines. A375, WM1341, and WM793 were all found to have basal levels of IL-24 protein. This result was anticipated from the previous IL-24 mRNA data and confirmed our hypothesis that IL-24 is constitutively present in some cells. These same cell lines also showed consistently increased levels of IL-24 protein when treated with high dose IL-2 (1000U/ml) as compared to cells cultured in media alone (Figure 6), and this increase was shown to be statistically significant. A375 exhibited an average increase in IL-24 levels of 43.0% ($p=0.01$) when

treated with IL-2. WM1341 showed an increase of 31.6% ($p < 0.01$) and WM793 had an increase of 27.4% ($p < 0.01$). WM35 and MeWo cells did not produce detectable levels of IL-24 regardless of treatment with IL-2 (data not shown). The actual percent increase in IL-24 levels varied between cell lines and experiments, but within the 3 responsive cell lines IL-2 stimulated cells always demonstrated increased levels of IL-24 protein. Each cell line was tested at least three times.

Based on cDNA analysis, soluble human IL-24 was predicted to be a monomeric 18 kDa protein [84]. However, data from several sources show that IL-24 protein derived from the HEK-293-IL-24 mammalian expression system exists as several different monomeric species with molecular weights ranging from approximately 18 to 32 kDa [104, 105]. These data point toward the possibility of post-translational modifications to the protein. Several groups, including our laboratory, have found that soluble IL-24 is N-glycosylated [106, 107], and secreted IL-24 is thought to contain three distinct N-glycosylation sites (49) which accounts for the immunoreactivity of multiple bands that our IL-24 antibody detects during Western blot analysis. IL-24 protein often appears as 2 or 3 separate bands in our blots depending on how far out the gels are run.

ELISA analysis of the cell lines showed that A375, WM1341, and WM793 cells secreted detectable levels of IL-24 into the supernatant constitutively, and that those cells treated with IL-2 for 24 hours secreted significantly more IL-24 protein than their untreated counterparts (Figure 7). IL-2 treatment caused an increase in IL-24 secretion in A375 by 56% ($p = 0.02$), in WM1341 by 82% ($p < 0.01$), and in WM793 by 40% ($p = 0.01$). WM35 and MeWo cells do not secrete any detectable levels of IL-24. Charcoal stripped FBS media was included as a control.

In order to confirm that the increases we observed in IL-24 levels were specifically due to the actions of IL-2, the IL-2 was neutralized by preincubating with a mouse-anti-hIL-2 antibody for 1 hour at room temperature prior to stimulating the cells. A representative Western blot from the IL-24 positive cell line WM1341 is shown (Figure 8). Neutralization of the IL-2 resulted in a reversal of its effects on IL-24 and was enough to bring IL-24 levels down to below baseline. This indicates that the elevations of IL-24 levels in these cells are a direct result of treatment with high dose IL-2.

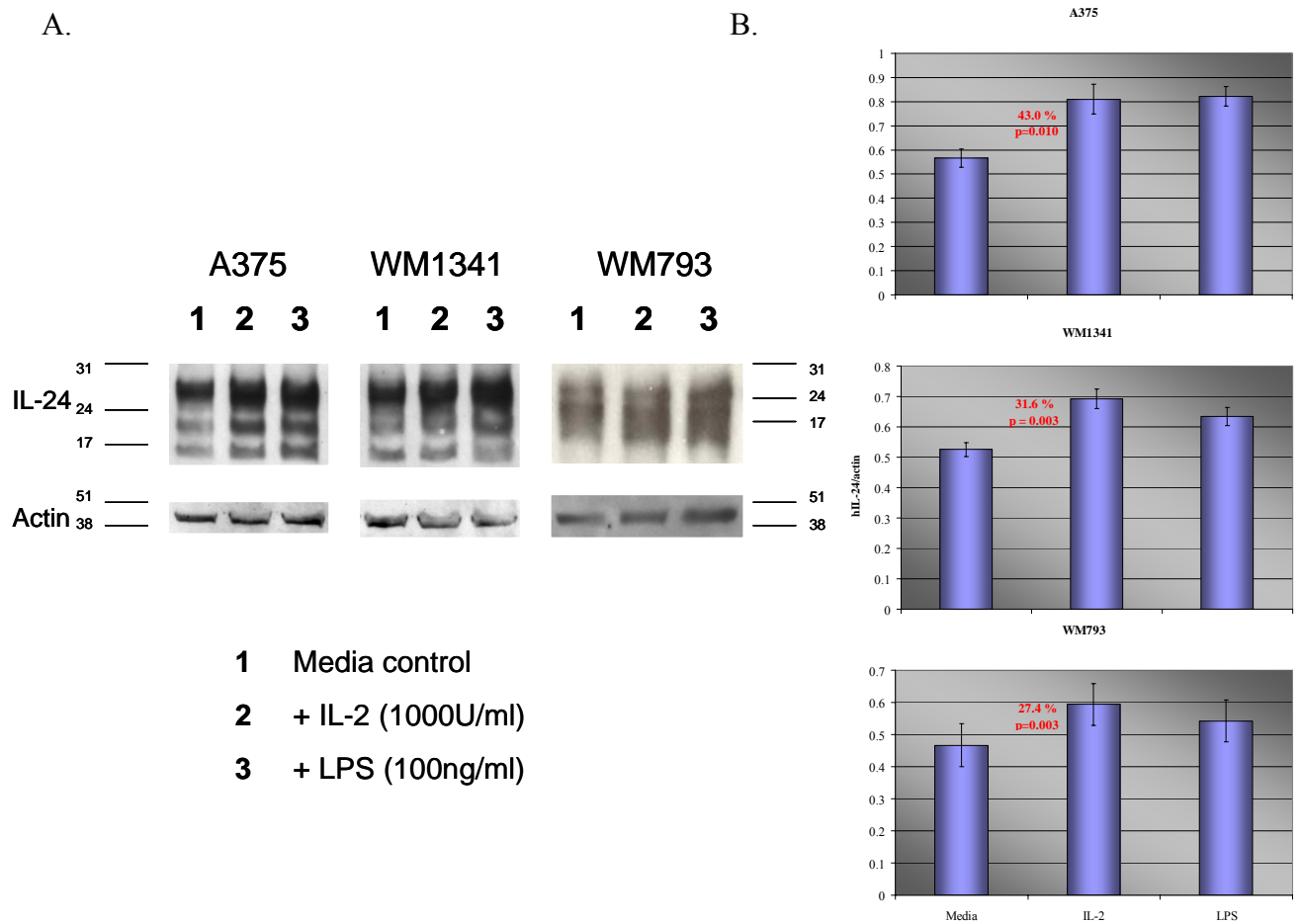


Figure 6. High dose IL-2 upregulates IL-24 expression in some melanoma cells – Cells were plated in 35mm dishes and then incubated with media alone, IL-2 (1000U/ml), or LPS (100ng/ml) for 24 hours. Brefeldin A was added 4 hours prior to harvesting the cells to halt protein secretion. a) Whole cell lysates were separated on a 12% SDS-PAGE gel and probed with 7G11 (mouse anti-human IL-24 antibody) and an anti-actin antibody as a protein loading control b) Western blot bands were quantified by normalizing to actin and then graphed as % of media control. Percent change and p-values were calculated by combining data from at least three experiments.

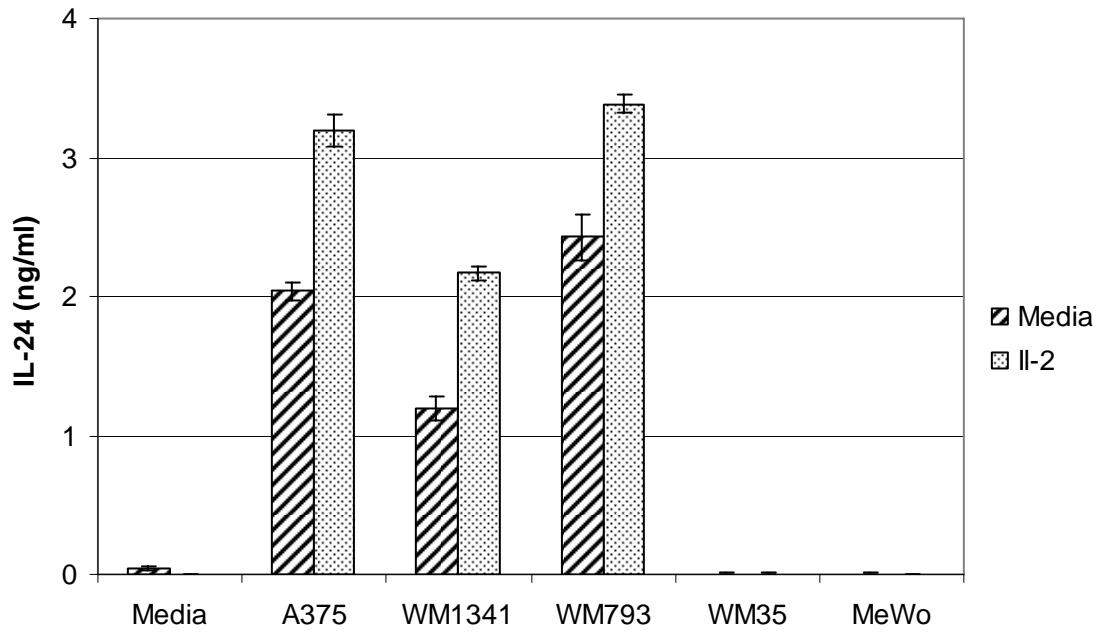
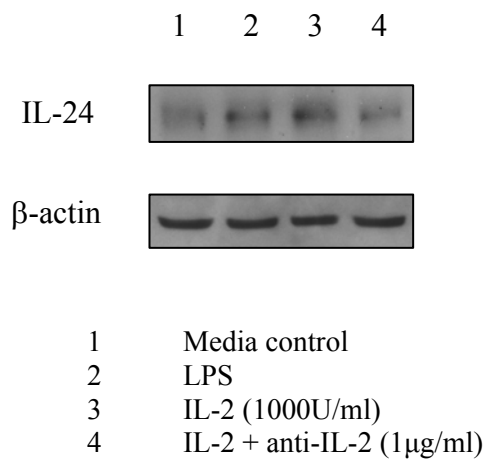


Figure 7. IL-24 is secreted by some melanoma cells. 1×10^6 cells were plated in 35mm dishes and serum starved overnight. Cells were then cultured in RPMI + 2% CSFBS with or without IL-2 (1000 U/ml). Supernatant was harvested at 24 hours and analyzed by ELISA in triplicate for secreted IL-24.

A.



B.

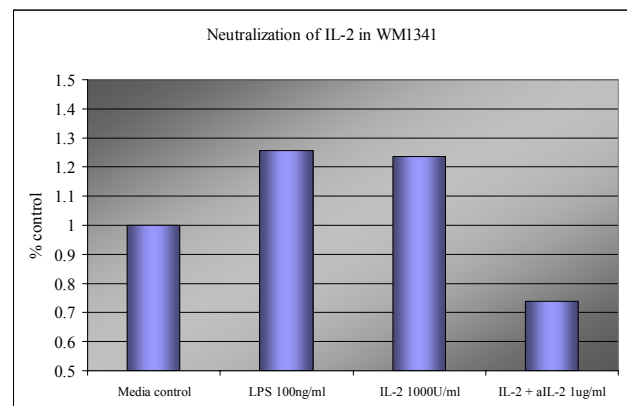


Figure 8. IL-2 upregulation of IL-24 can be neutralized with anti-IL-2 antibody. Shown here in a representative blot, IL-2 was preincubated with a neutralizing mouse-anti-hIL-2 antibody for 1 hour at room temperature before being added to WM1341 cells. A) Cells were harvested at 24 hours and analyzed by Western blot. B) Protein quantitation was performed by normalizing bands to actin.

Melanoma cells have IL-2R mRNA

Given our evidence that IL-2 has a direct biological effect on some melanoma cells, we hypothesized that the IL-2 receptor must therefore be present on these cells. IL-2 mediates its effects on T cells by binding and signaling through the IL-2 receptor [108]. The receptor complex on lymphocytes is composed of three chains - α , β , and γ which in different combinations form intermediate and high affinity receptors for IL-2 [109, 110]. Precedence exists for our hypothesis that some of our melanoma cells must contain one or more chains of the IL-2 receptor. Several articles in the literature report that IL-2 receptor chains are present on the surfaces of both human and murine cutaneous melanoma cells (85-90). IL-2R β in particular has been identified in a number of cancer cell lines including small cell lung cancer and squamous cell carcinoma of the head and neck (91;92), and melanoma.

Each of our five cell lines was found to have measurable IL-2R β and IL-2R γ mRNA at varying amounts when analyzed by RT-PCR (Figure 9). IL-2R α message was not detected in any of these cell lines. However, the IL-2R α chain serves only to stabilize the interaction between IL-2 and its receptor; IL-2R α is not required for IL-2R signal transduction [111]. IL-2R β and γ form an intermediate affinity receptor for IL-2. These findings support our hypothesis that IL-2 can have a direct effect on melanoma cells by signaling through its receptor.

To confirm that IL-2 signals specifically through its receptor to upregulate IL-24 in these cells, the IL-2 receptor was first blocked by preincubating WM1341 and A375 cells with antibodies specific for each of the three IL-2 receptor chains for 1 hour at room temperature and then stimulating with IL-2 (Figure 10). All antibodies were use at the concentrations suggested by the manufacturer, R&D Systems. As predicted, blocking with

antibodies to the IL-2 receptor chains prior to adding the IL-2 resulted in a decrease in IL-24 levels as compared to unblocked cells. This inhibition was seen most dramatically with the blocking of IL-2R β suggesting that the IL-2R β chain is essential for IL-2 upregulation of IL-24 expression. Mouse IgG was used at 60 ug/ml, a dose equal to the highest concentration of IL-2R antibody used, as a negative control antibody in order to rule out the effects of any nonspecific blocking. A representative Western blot from the IL-24 positive cell line WM1341 is shown.

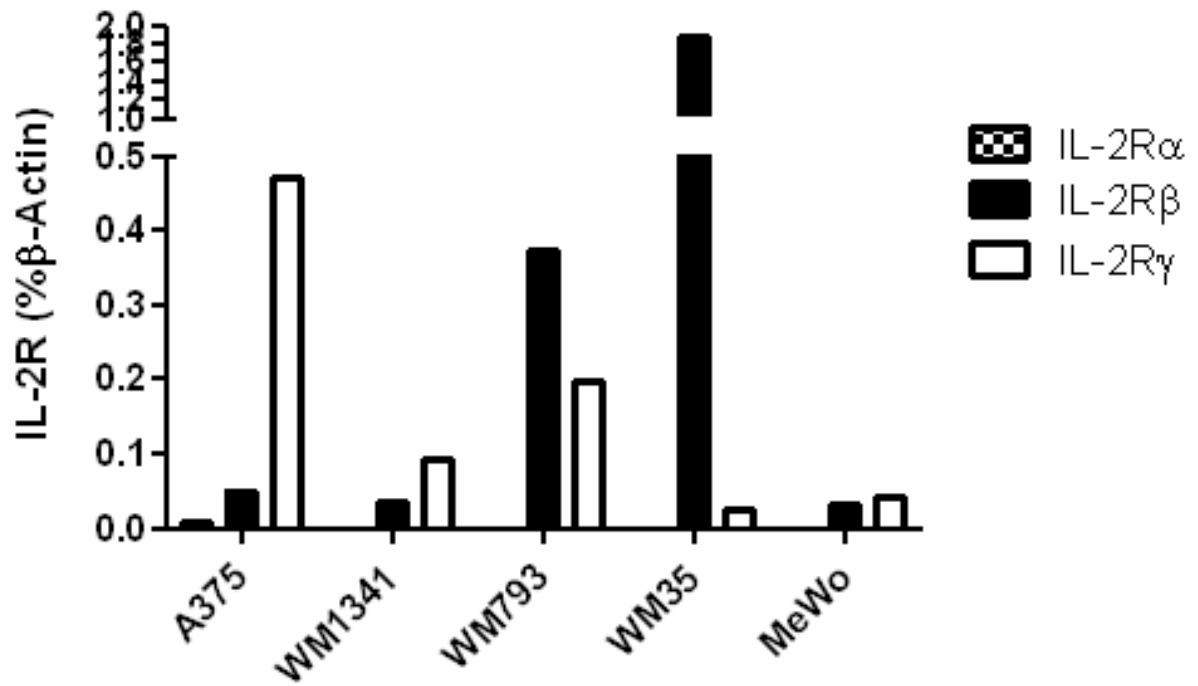


Figure 9. IL-2R β and IL-2R γ chain mRNA is present in melanoma cell lines. Total RNA was extracted from 5 cell lines and analyzed by RT-PCR for IL-2 receptor chain message.

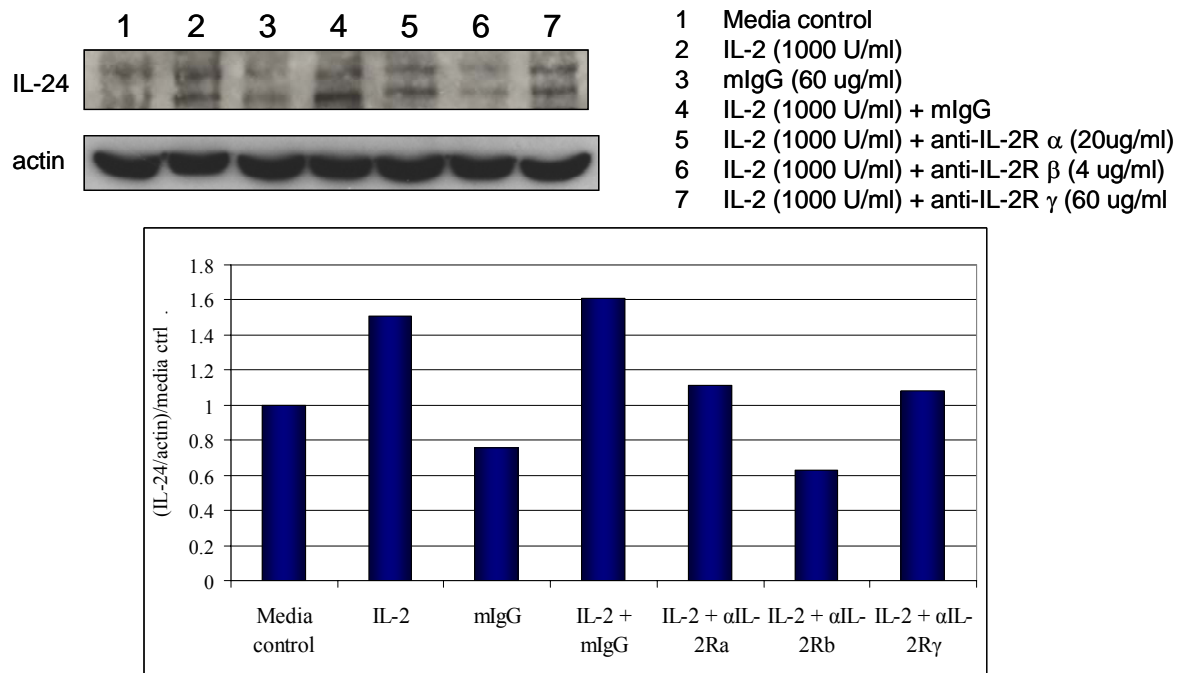


Figure 10. IL-2 mediated IL-24 production is abolished by blocking the IL-2R. Cells were preincubated with blocking antibodies against the three IL-2 receptor chains (α , β , and γ) at the concentrations noted per the manufacture's protocol for 1 hour at room temperature prior to the addition of IL-2 (1000U/ml). mIgG was used as an antibody negative control. Cells were harvested at 24 hours and analyzed by Western blot. A representative blot is shown here in WM1341 cells.

IL-15 upregulates IL-24 expression in melanoma cell lines

Once the presence and importance of IL-2R β on these melanoma cells were established, the next logical step was to determine if the upregulation of IL-24 is specific to stimulation with IL-2. Utilization of other cytokines which also signal through the IL-2R chains was considered. IL-15 was of particular interest because it is the only cytokine known to share both the IL-2R β chain and common gamma chain [112, 113]. Thus, we hypothesized that stimulating cells with IL-15 would also have an effect and result in increased levels of IL-24 expression.

Cells were stimulated with IL-15 (500 U/ml) for 24 hours and cell lysates were analyzed by Western blot analysis for IL-24 protein. IL-2 and LPS stimulated cells were included as controls. All three IL-24 positive cell lines showed upregulation of IL-24 when treated with IL-15 (Figure 11). In A375 and WM1341, this increase was even higher than that seen with high dose IL-2 stimulation. This data together with the IL-2 receptor blocking experiment confirms the significance of IL-2R β for IL-24 upregulation. It also points toward the potential therapeutic use of IL-15 as a treatment for melanoma.

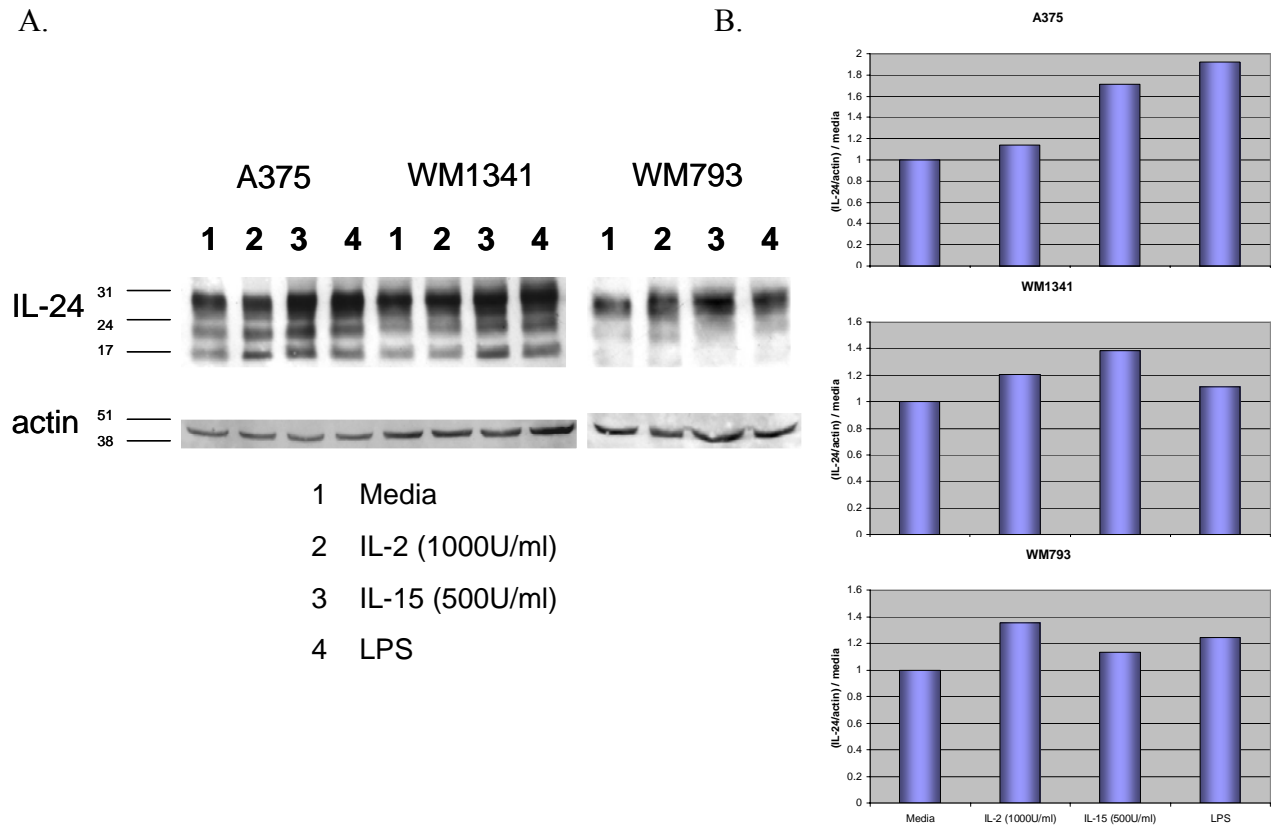


Figure 11. IL-15 upregulates IL-24 expression in some melanoma cells. Cells were incubated with media alone, IL-2 (1000U/ml), IL-15 (500U/ml), or LPS (100ng/ml) for 24 hours. Brefeldin A was added 4 hours prior to harvesting the cells to halt protein secretion. a) Cell lysates were separated on a 12% SDS-PAGE gel and probed with 7G11 and an anti-actin antibody as a protein loading control b) Western blot bands were quantified by normalizing to actin. Data is presented as % of IL-24 expression in media control.

IL-2 causes growth suppression in some melanoma cells

RT-PCR showed that IL-2R β is present on these melanoma cell lines. It has been reported that several other cancers including squamous cell carcinoma, renal cell carcinoma, and gastric carcinomas are growth inhibited by IL-2 signaling specifically through the IL-2R β chain [114, 115]. We hypothesized that this also might be the case in the subset of melanoma patients who respond to high dose IL-2 therapy and that these patients might be represented by some of our melanoma cell lines.

Cells for each condition were plated in triplicate in 24 well plates and grown in RPMI + 2% CSFBS with or without IL-2 (1000 U/ml) added at day 0. MTT assays were initially attempted but failed to show any differences in growth. Because the MTT assay relies on functional mitochondria to break down the tetrazolium bromide, it is not an ideal assay for melanoma cells which are known to have mitochondrial mutations [116-118]. Instead, cells were counted and cell viability assessed by Trypan blue dye exclusion assay on days 2 through 6 (Figure 11a). In WM1341 and WM793, cells treated with IL-2 had significantly fewer viable cells by day 4 ($p \leq 0.01$). A375 showed statistically significant growth suppression with IL-2 by day 5 ($p = 0.04$). By day 6, IL-2 treated cells exhibited 18-32% less growth than untreated cells. The growth of the IL-24 negative cell lines WM35 and MeWo was unaffected by treatment with IL-2. Although WM35 cells had the highest level of IL-2R β (Figure 9), IL-2 had no effect on its growth. This implies that IL-2 mediated growth suppression is dependent on the IL-24 status of the cells.

IL-2 mediated growth suppression is dependent on IL-24

As discussed in the introduction, the tumor suppressive characteristics of IL-24 have been well documented. IL-24 has been shown to cause tumor specific growth suppression and apoptosis both *in vitro* and *in vivo*, including lung, pancreatic, and breast cancer cells, while demonstrating no apparent toxicity to normal cells [56, 64, 65, 119-125]. Data from our laboratory further demonstrates IL-24's cytotoxicity to human melanoma cell lines. These data all support the tumor suppressor activity ascribed to IL-24 [126]. Based on our data which show that treatment with IL-2 causes increased IL-24 protein production and secretion in some melanoma cell lines, it is reasonable to conjecture that these amplified levels of IL-24 might subsequently cause growth suppression in those cell lines. According to the literature, melanoma cells transduced with Ad-mda7 (introduction of the IL-24 gene via adenoviral vector) can secrete IL-24 protein which then plays a tumor selective cytotoxic bystander role [70].

Therefore, we hypothesized that the growth suppression seen in response to IL-2 (Figure 12a) is IL-24 dependent. Consequently, blocking the effects of the secreted IL-24 with an anti-IL-24 monoclonal antibody should reduce the growth suppression observed in IL-2 responsive cells. In addition we hypothesized that blocking the production of IL-24 directly by silencing IL-24 mRNA should also inhibit the growth suppression seen with IL-2 stimulation.

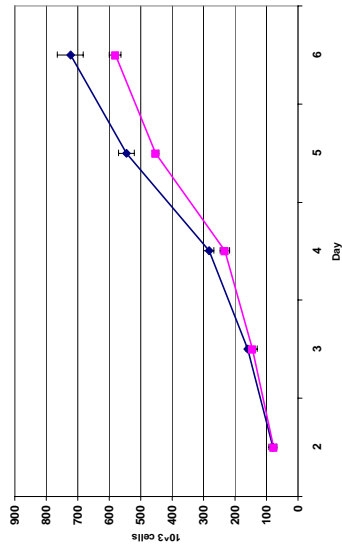
Once again, cell viability was assessed by Trypan blue dye exclusion assay. A375 and WM1341 cells treated with 7G11 (an anti-IL-24 monoclonal antibody) to block the effects of secreted IL-24 displayed growth curve patterns similar to those cells grown in media alone without IL-2 (Figure 12b), i.e. no significant growth suppression was detected.

Cells were also treated with mIgG with or without IL-2 as controls; these cells behaved like their non-mIgG treated counterparts. The addition of 7G11 had no effect on the growth of WM35 and MeWo cells which do not express IL-24 protein. These data indicate that IL-2 mediated growth suppression in melanoma cell lines is directly due to IL-24.

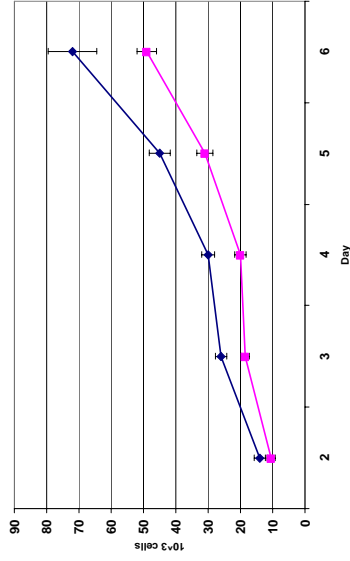
In order to directly block IL-24 production, two IL-24 positive cell lines (A375 and WM1341) and one IL-24 negative cell line (WM35) were treated with IL-24 siRNA or a non-coding siRNA negative control for 48 hours prior to the addition of high dose IL-2 on day 0. Cell viability was assessed at day 6 as shown in Figure 12c. Although it is understood that the silencing effects of the siRNA transfection last only up to 72 hours, even this initial temporary inhibition of IL-24 production demonstrated a noticeable effect on cell growth. These growth suppression assays show that in IL-24 positive cell lines, silencing IL-24 at the mRNA level counteracts the IL-2 mediated growth suppressive effects previously observed (Figure 12c). In these cell lines, there was no significant difference seen between the IL-24 silenced cells that were cultured with IL-2 and those without IL-2. There was a loss of total cell number due to toxicity in both the control oligofectamine treated cells and non-coding siRNA treated cells, but IL-2 maintained its growth suppressive effects in both of these groups ($p \leq 0.05$). In WM35, an IL-24 negative cell line, treating with IL-24 siRNA had no effect on growth between IL-2 treated and non-treated cells. IL-24 knock-down was verified by RT-PCR for IL-24 message in cells transfected with either non-coding control siRNA or IL-24 siRNA (Figure 13). These data also confirm that IL-2 mediated growth suppression is directly dependent on IL-24.

A. IL-24 positive cells lines

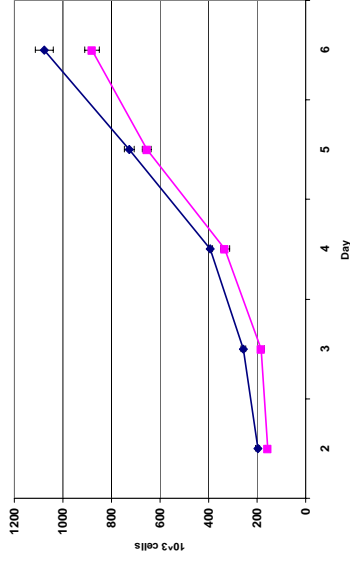
A375



WM1341



WM793



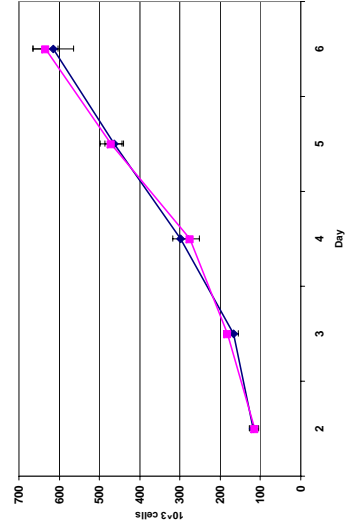
	Day 4		Day 5		Day 6	
	% decrease	p	% decrease	p	% decrease	p
A375	18	0.14	17	0.04	20	0.04
WM1341	33	0.01	31	0.04	32	0.02
WM793	15	<0.01	10	<0.01	18	<0.01

Media

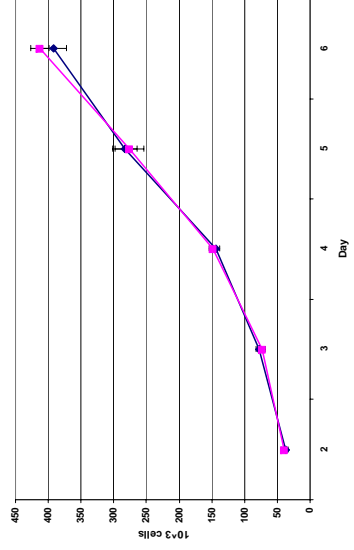
Media + IL-2
(1000U/ml)

IL-24 negative cells lines

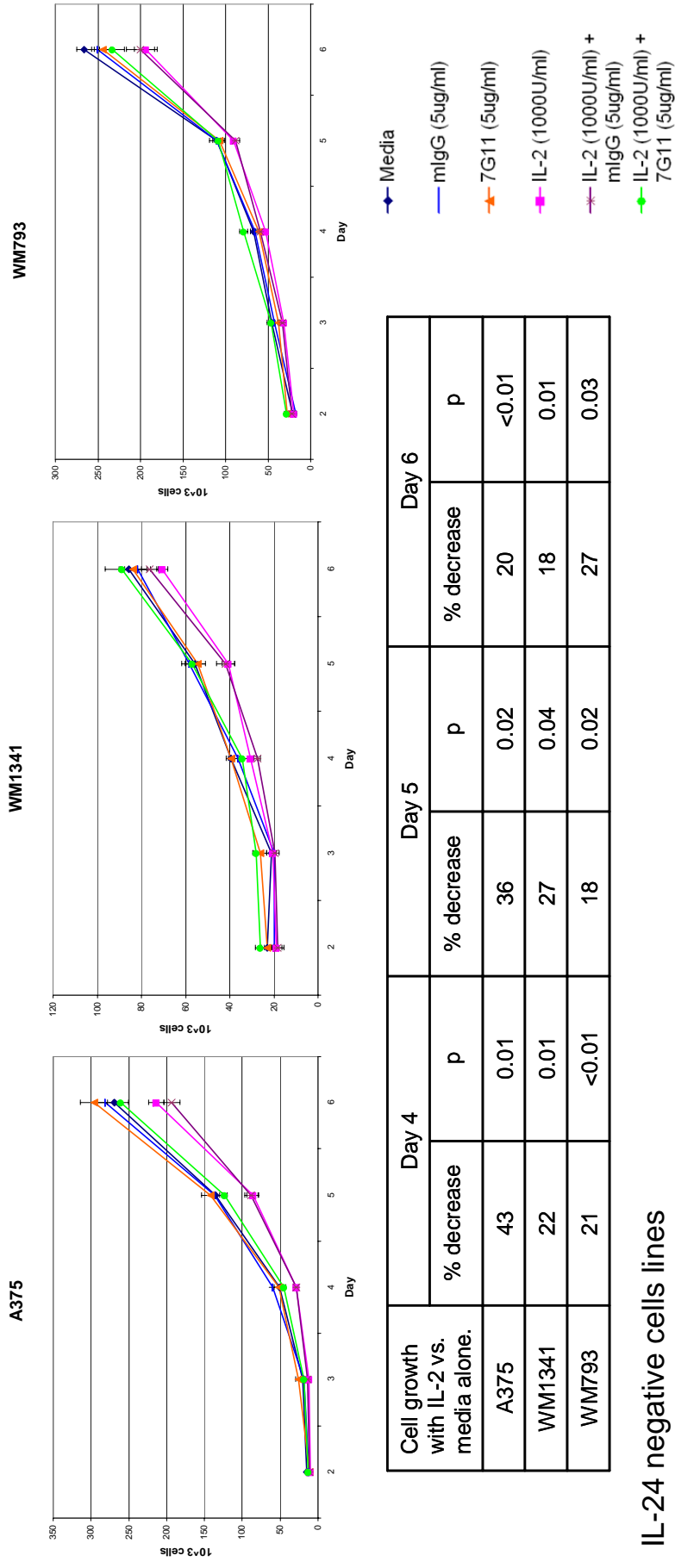
WM35



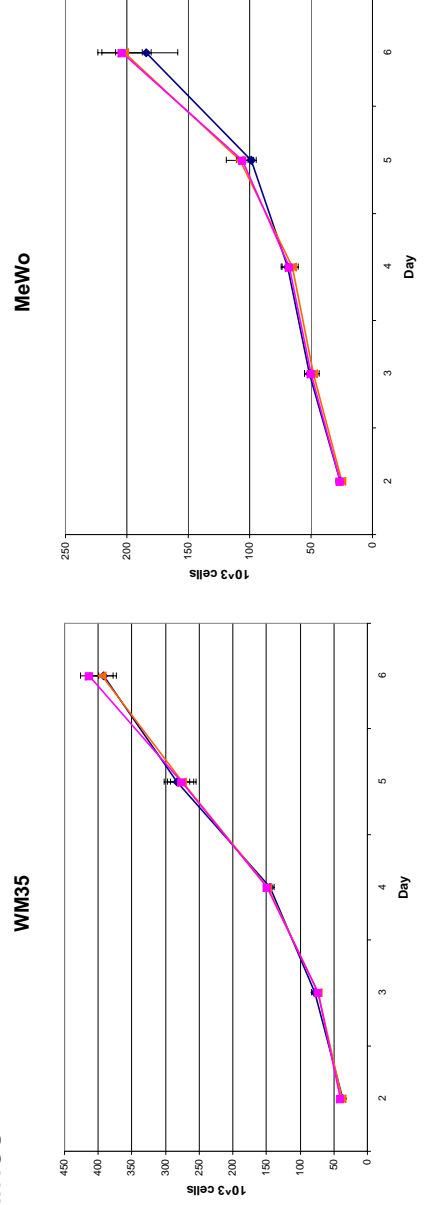
MeWo



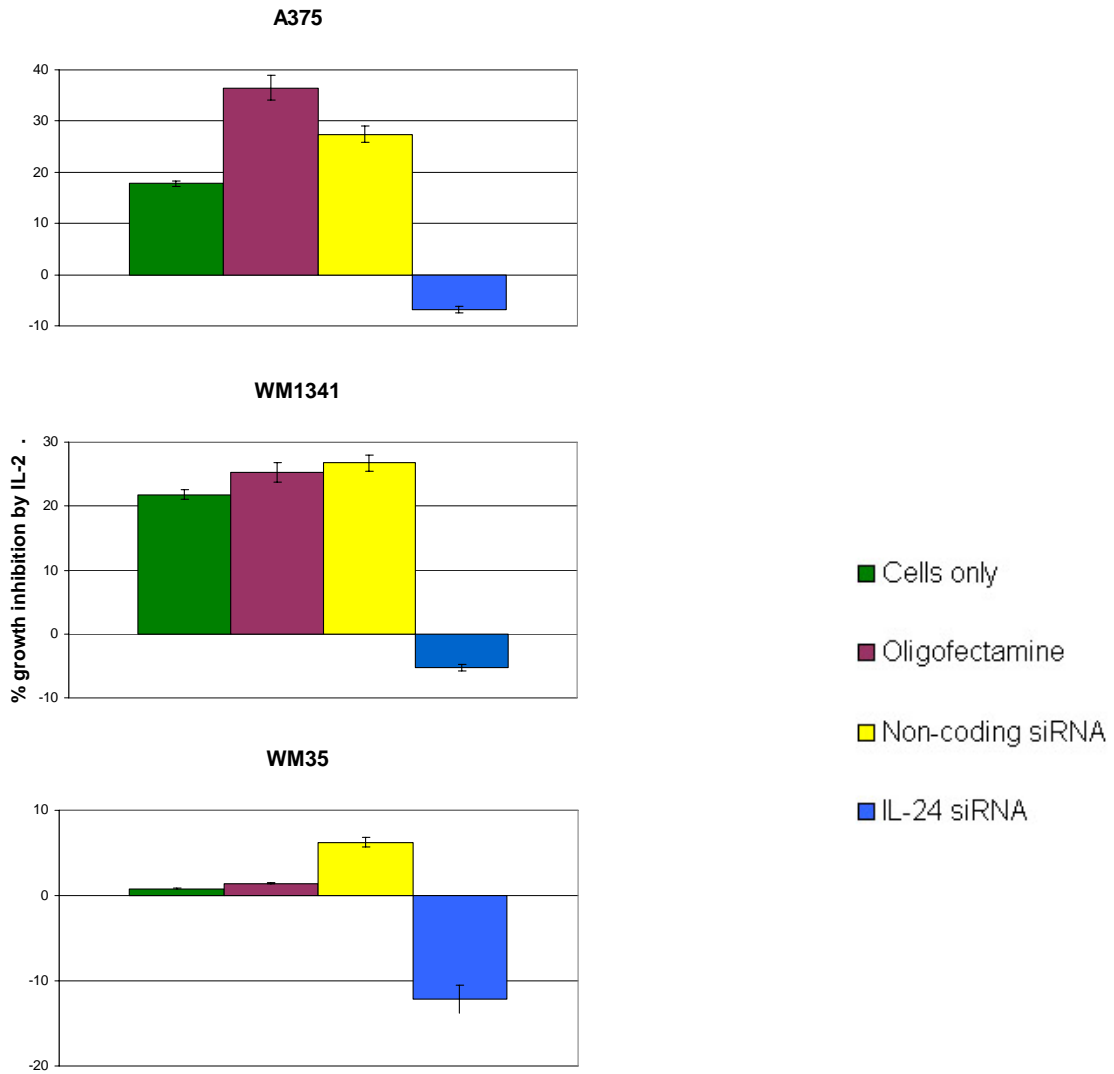
B. IL-24 positive cells lines



IL-24 negative cells lines



C.



	Media % inhibition		Oligofectamine % inhibition		Non-coding siRNA % inhibition		IL-24 siRNA % inhibition	
A375	18	p=0.03	36	p=0.01	27	p<0.01	-7	p=0.65
WM1341	22	p=0.01	25	p=0.05	27	p=0.05	-5	p=0.74
WM35	0	p=0.94	1	p=0.88	6	p=0.58	-12	p=0.62

Figure 12. Effects of IL-2 on Melanoma Cell Growth by Trypan Blue Assay. Cells were plated in 24 well plates with each condition in triplicate. Cells were serum starved overnight and then stimulated on day 0. The table indicates the % decrease in cell growth observed when treated with IL-2 as compared to cells grown in media alone. A. IL-2 effects on melanoma cell growth. B. Blocking the effects of secreted IL-24 with 7G11 (mouse-anti-IL-24) antibody. C. siRNA transfected melanoma cell growth at day 6. All data is presented as % growth inhibition by IL-2 compared to cells grown in media alone ($1 - (\text{IL-2 treated cells}/\text{media})$).

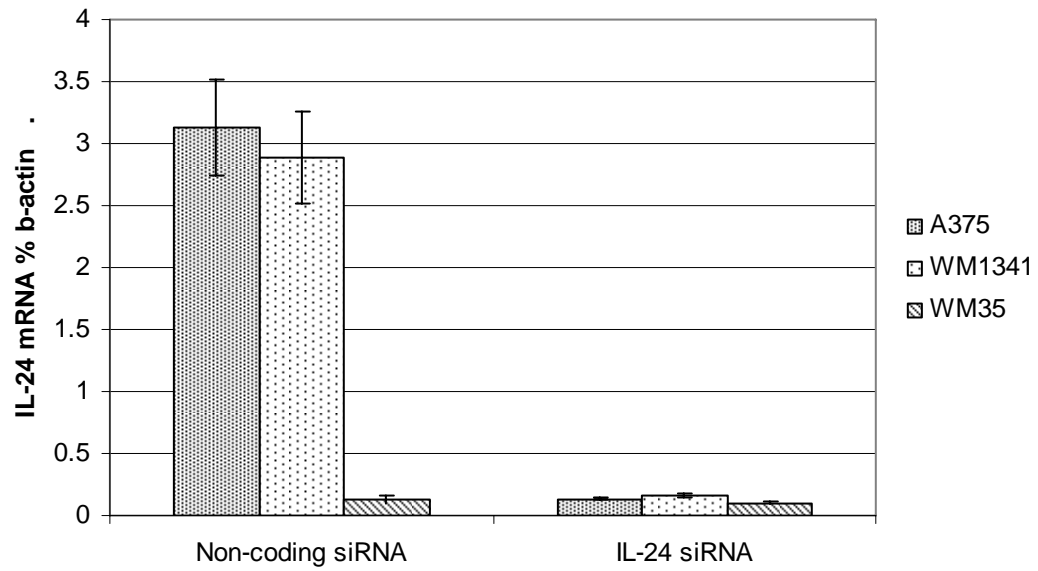


Figure 13. IL-24 siRNA effectively knocks down IL-24 mRNA in melanoma cell lines. Cells were harvested 24 hours after treatment with siRNA and analyzed for IL-24 and actin mRNA by RT-PCR. IL-24 mRNA data is shown as % b-actin.

IL-15 causes growth suppression in A375 cells

Our data has established that in A375, WM1341, and WM793 cells IL-2 causes growth suppression in an IL-24 dependent manner. Stimulating those cell lines with IL-15 also results in upregulation of IL-24 protein expression. It is known that IL-15 signals through the same IL-2R β and IL-2R γ chains as IL-2. Thus, we hypothesized that IL-15 should also cause growth suppression in IL-24 positive cell lines. This hypothesis was investigated in the A375 melanoma cell line. The experimental design was identical to the growth suppression assays previously described and were done in parallel with IL-2. Cells were grown in media alone, IL-15 (500 U/ml), or IL-2 (1000 U/ml). Results showed that cells treated with IL-15 demonstrated significant growth suppression of approximately 19-25% over days 4 through 6 (p=0.02 by day 4). These results are comparable to those cells treated with IL-2 (Figure 14).

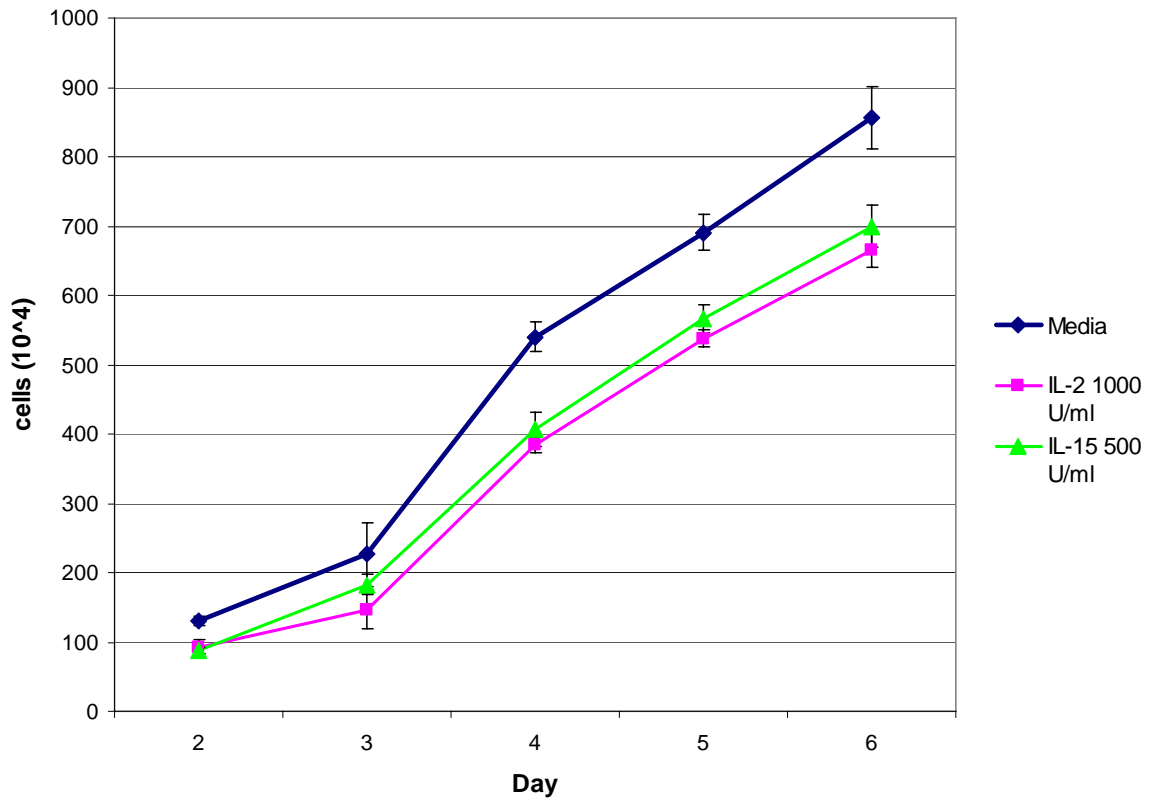


Figure 14. IL-15 causes growth suppression in A375 cells by day 4. Cells were plated in 24 well plates with each condition in triplicate. Cells were serum starved overnight and then stimulated on day 0.

Serum levels of IL-24 in high dose IL-2 patients

We hypothesized that because IL-2 upregulates IL-24 protein expression in some cells, it might be possible to measure any subsequent systemic changes in the serum of patients. Dr. Laslo Radvanyi (M. D. Anderson Cancer Center, Houston, TX) generously donated serum from 14 high dose IL-2 patients receiving treatment at M. D. Anderson Cancer Center (Protocol LAB06-0762, P.I. Dr. Laslo Radvanyi). Rich Joseph in Dr. Radvanyi's laboratory compiled a clinical database of the responses in those patients.

On this protocol, each cycle of high dose IL-2 therapy consists of 720,000 IU/kg of Aldesleukin (human rIL-2) via intravenous infusion over 15 min given up to 12 times per cycle, with each dose/infusion spaced 8 h apart. Cycle 2 is given 21 days later; patients can receive up to 12 cycles of therapy depending on tolerance and toxicity. Patients are assessed after cycle 2 by CT and if they progress, they are taken off IL-2 therapy. Patients with disease stabilization or a partial response continue with therapy cycles until no more tumor shrinkage occurs, or until they progress or undergo a complete response. Most people withdraw after 2 or more cycles due to toxicity (vascular leak syndrome, fever, fatigue, mental confusion, liver dysfunction). During each cycle, these toxicities are closely monitored (especially liver) and if liver dysfunction begins, the infusions are stopped. Most patients can take up to 6-8 infusions per cycle of therapy; some can take all 12.

Serum was obtained from 10 nonresponders and 4 responders at three separate time points – prior to the first dose, 5 hours after the fourth dose, and 2 days after the last dose of cycle 1. Data from our laboratory examining normal serum from 15 donors shows that IL-24 binds to other serum proteins; markedly higher amounts of IL-24 were detectable by ELISA after serum samples were heat released by heating at 56 degrees C for 30 minutes. Based on

this data, patient serum samples were heat released before being analyzed by ELISA for IL-24 and IL-2 levels.

Six of 10 nonresponder patients had measurable levels of IL-24 that peaked or continued to increase >20% over pretreatment levels after the fourth high dose IL-2 treatment time point. IL-24 levels measured with this assay varied over a wide range from 130 pg/ml to 13,700 pg/ml. The remaining 4 nonresponders as well as all 4 responders had serum levels of IL-24 below the limits of our ELISA kit standard curve (<62 picograms/ml) at any of the time points tested. We observed no obvious correlations between quantifiable serum levels of IL-24 and any specific responses recorded in the clinical database for this small group of patients. 75% of the 4 nonresponders with undetectable IL-24 levels died of their disease while the only one third of the 6 nonresponders with measurable IL-24 had died at the time these experiments were run. However, the 4 patients who responded to therapy also did not have measurable IL-24 by our assay. It is possible that any changes in IL-24 level might be better detected at an earlier time point. Furthermore we believe that it is more likely that any clinical relationship between measurable differences in IL-24 before and after high dose IL-2 treatment and patient response to treatment would be better detected in the tumor microenvironment and not in the serum.

Discussion

IL-2 upregulates IL-24 protein expression leading to growth suppression in melanoma cells

In this dissertation, we have shown a novel mechanism of IL-2 action in melanoma (Figure 15). We have established that A375, WM1341, and WM793 melanoma cells have IL-24 mRNA while WM35 and MeWo cells lack it. We have confirmed that high dose IL-2 has a direct effect on some melanoma cells, causing upregulation of IL-24 protein expression and secretion in cell lines that possess IL-24 mRNA. IL-2 mediates this activity by signaling through the IL-2 receptor on these cells; the IL-2R β chain in particular appears to be essential for this action. These IL-2 produced increases in IL-24 protein levels subsequently result in the suppression of tumor cell growth, and this growth suppression has been confirmed to occur in an IL-24 dependent manner. IL-15, which shares the IL-2R β chain with IL-2, has also been discovered to be capable of upregulating IL-24 protein expression, consequently causing growth suppression in IL-24 positive cells.

While we do not disagree with the valuable role of IL-2 as an established immunotherapy, these data together give us novel confirmatory evidence that high dose IL-2 directly affects melanoma tumor cells via its receptor, causing IL-24 upregulation and secretion and subsequent tumor growth suppression. It is possible that the group of patients whose melanoma cells respond to IL-2 by producing increased IL-24 are the subset of patients with durable responses to high dose IL-2. We therefore envision exciting implications for possible predictive biomarkers of IL-2 response for targeted therapy and potential alternative therapeutics for melanoma. This is promising given our evidence that the IL-2R β chain plays a significant role in our novel pathway and that only the IL-24

positive melanoma cells lines showed growth suppression with high dose IL-2 treatment. Additional support for the use of these two molecules as biomarkers of IL-2 response is discussed in further detail later in this section. Of course, we cannot discount the effects of high dose IL-2 actions on the immune system. Although we have shown the direct effects of IL-2 on melanoma cells *in vitro* in the absence of any immune cells and believe that it may contribute to patient response to treatment, this mechanism must also be researched *in vivo*. It may be that in the *in vivo* setting, the effects of IL-2 as an immunotherapy on the immune system far outweigh the direct effects seen *in vitro*. Therefore, more work must be done to determine the direct effects of high dose IL-2 on melanoma cells *in vivo*.

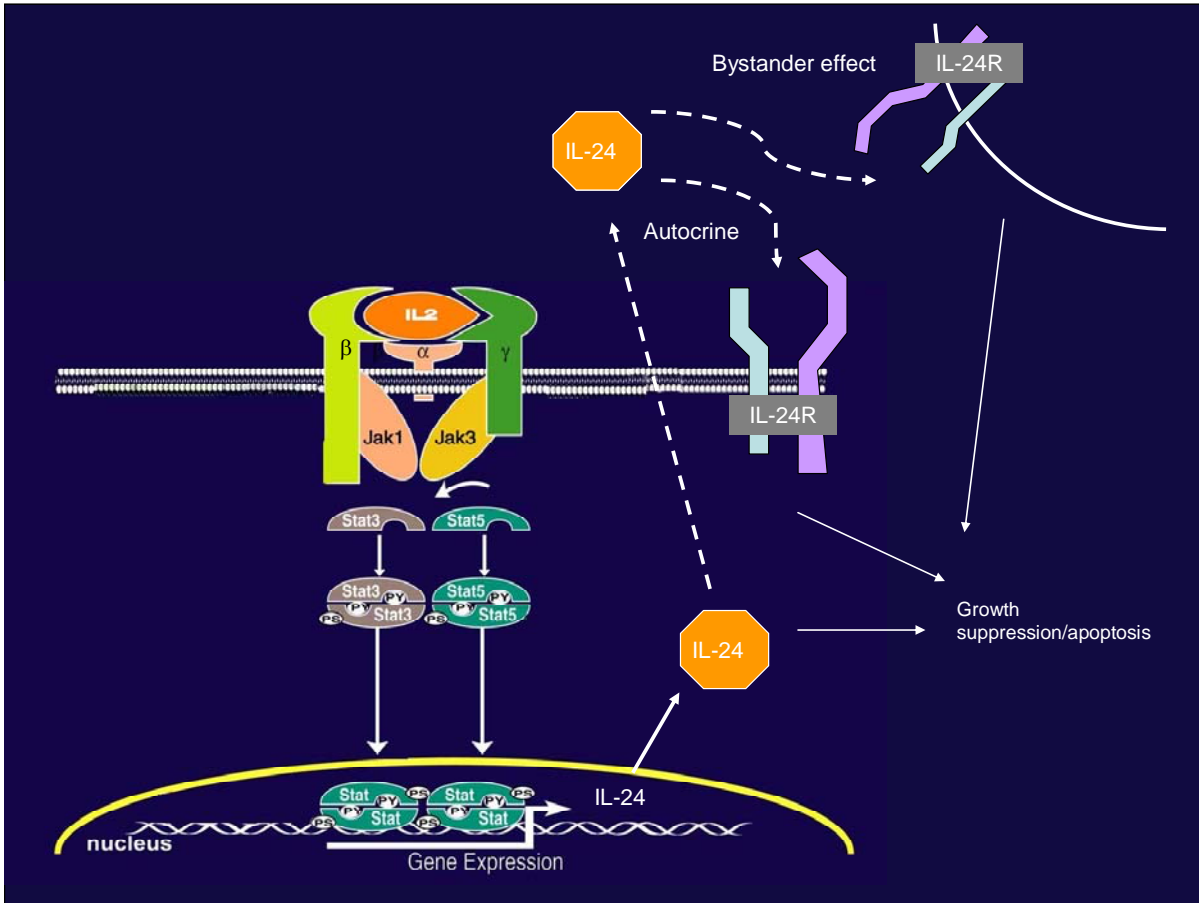


Figure 15. Proposed novel mechanism for IL-2 direct effects on melanoma: IL-24 dependent IL-2 mediated growth suppression in melanoma cells. IL-2 binds its receptor (i.e. IL-2R β) on melanoma cells causing upregulation of IL-24 protein expression (possibly via message stabilization). These increased levels of IL-24 subsequently cause melanoma tumor cell growth suppression both in an autocrine and paracrine (bystander) manner in tumor cells with IL-24 receptor.

Upregulation of IL-24 expression has also been reported in the inflammatory dermatologic process psoriasis, which involves overactive immune stimulation and excessive skin production (psoriatic plaque formation) [127, 128]. Conflicting data has been presented in the literature regarding the role of IL-24 in psoriasis. The pattern of expression of IL-24 and its receptor *in vivo* indicate that a major physiological function of IL-24 is its involvement in wound healing [59, 129]. Keratinocytes from the epidermis are one of the major targets of IL-24 [53, 107]. It is hypothesized that irregularities in IL-24 function may contribute to pathological skin conditions such as psoriasis [130]. In psoriasis, IL-24 is produced by infiltrating mononuclear cells migrating to the dermal layer directly below the psoriatic epidermis [131]. IL-24 protein and receptor overexpression have also been observed in the epidermal keratinocytes of psoriatic skin [130, 131], suggesting a potential link between the over-activation of IL-24 signaling pathways and overgrowth of keratinocytes. As with other pro-inflammatory cytokines, excess IL-24 can exacerbate immunological conditions. Therefore, constitutive production of IL-24 by the monocytes in the dermis in addition to the overexpression of IL-24 and its receptor on keratinocytes could lead to continual receptor activation and result in abnormal cell proliferation of the keratinocytes in the epidermis; this process would subsequently lead to the development of psoriasis.

However, it has also been reported by other groups that the expression of three specific IL-20/IL-24 combined haplotypes demonstrated a significant protective effect against plaque-type psoriasis [132]. One of the IL20/IL24 haplotypes was also associated with a reduced risk for palmoplantar pustulosis (pustular psoriasis) [133]. Our laboratory has published that IL-24 protein actually inhibits growth factor stimulated proliferation and

migration of keratinocytes during wound healing, causing the contraction of the wound and return of keratinocytes to their normal differentiating processes [134]. Therefore, the loss of IL-24 expression, not upregulation, could lead to uncontrolled keratinocyte proliferation and abnormal healing.

Elevated levels of IL-24 are also seen in patients with latent tuberculosis (TB) [135]. IL-24 has been determined to modulate IFN- γ expression in patients with tuberculosis infection [136]. A correlation exists between IFN- γ expression and the development of TB. T cells and NK cells secrete IFN- γ in response to *Mycobacterium tuberculosis* (*Mtb*) [137]; a defect in IFN- γ would leave the host susceptible to *Mtb* infection [138]. Therefore, an inability to mount a Th1 response may contribute to progression to active tuberculosis. IL-24 increases the expression of IFN- γ stimulating cytokines including IL-12, IL-23, and IL-27 in PBMC. Increased IL-24 expression has been reported during viral and bacterial infections [139], and IL-24 expression is elevated in newborns that have been BCG vaccinated [140]. Latent tuberculosis is defined as infection with *Mycobacterium tuberculosis*, but not active tuberculosis disease. Studies found that patients with latent *Mtb* infection produce high levels of IL-24 and IFN- γ while patients who progress to TB disease have low levels of IL-24 and IFN- γ [141]. Addition of exogenous IL-24 boosts expression of IFN- γ while neutralization of IL-24 results in low expression of IFN- γ . If the patient progresses to TB disease, treatment with exogenous IL-24 may be useful.

There is significant evidence in the literature substantiating the role of IL-24 as a tumor suppressor. IL-24 has been shown to cause growth suppression and apoptosis in numerous different cancer cells including melanoma [124, 125, 142-144]. The Ad.*mda-7* gene construct has been used in Phase I/II gene therapy clinical trials [56, 78, 79, 145]

through intratumoral injection of the *Ad.mda-7* construct [78, 79]. In the phase I/II clinical trials IL-24 was well tolerated and showed considerable apoptotic activity in injected lesions [78, 83, 146, 147]. Therefore, overexpression of IL-24 in cancers has a well documented anti-tumor effect, and this supports our data that upregulated IL-24 causes melanoma growth suppression.

The idea that IL-2 could have a direct effect on melanoma cells is not unprecedented. Other cytokines have also been shown to impose direct effects on a variety of cancer cells. The actions of transforming growth factor – beta (TGF- β) in particular have been extensively studied in many cancers. In normal cells TGF- β acts as a tumor suppression regulating a wide spectrum of cellular functions including the restriction of cell growth, differentiation, and apoptosis [148-150]. Many cancers have been shown to possess the TGF- β receptor. In pancreatic cancer, vascular smooth muscle cancer, and cervical cancers, TGF- β has been discovered to induce apoptosis by signaling through its receptor to activate Smad3 signaling and repress telomerase reverse transcriptase (TERT) [151]. However, during the development of some carcinomas, including colon, breast, and prostate cancer, various elements to the TGF- β signaling pathway become mutated. Research shows that one third of colon cancer tumors have mutated TGF- β receptors, and that other tumors have mutations in the signaling pathway activated by TGF- β [152-154]. Both of these pro-oncogenic conditions lead to unrestricted cell proliferation. Further studies must be done to determine the mechanism and IL-2 signaling pathway elements involved in the direct tumor suppressive effects of IL-2 that we have shown in melanoma cells.

IL-2 mediates its actions by binding to its receptor [109, 155, 156]. This ligand-receptor interaction results in activation of Ras/MAPK, JAK/Stat, and PI3-kinase/Akt signaling pathways leading to downstream gene transcriptional regulation and the proliferation and activation of lymphocytes as shown previously in Figure 2 (151).

As an immunotherapeutic agent, IL-2 directs its anti-tumor functions through cell-mediated immunity. IL-2, formerly called T cell growth factor, drives T cell differentiation and proliferation. It activates T cells and NK cells transforming them into more efficient cytotoxic cells called lymphokine activated killer (LAK) cells [157-159]. These LAK cells then destroy tumor cells by antibody dependent cell mediated cytotoxicity (ADCC). They bind to the tumor cells directly and secrete cytolytic enzymes (perforin and granulysin) which kill the target cell. Early studies of IL-2 as an immunotherapy demonstrated that injection of LAK cells and rhIL-2 inhibited the growth of pulmonary metastases and subcutaneous melanoma in mice [160].

High dose IL-2 received FDA approval for patients with advanced melanoma in 1998 based on its ability to produce durable responses. Clinical tumor regression in response to high dose IL-2 is well documented in a minority of patients. Data collected from numerous Phase II studies showed a response rate of 16%, with 6% of patients achieving a complete response and 10% a partial response [161-164]. One group studied the anti-tumor activity of systemic treatment with *Salmonella typhimurium* expressing IL-2 in a melanoma mouse model. They reported that mice treated with the bacteria showed decreased angiogenesis as well as increased tumor necrosis and increased survival times [165]. In humans, a phase II trial found that in melanoma patients treated with intralesional IL-2 injections histologic studies of patient biopsies showed evidence of tumor necrosis. Immunofluorescence analysis

by confocal laser scanning microscopy revealed caspase 3 staining of tumor cells undergoing apoptosis [78, 166, 167].

Although there have been a few reports of IL-2 receptor and direct IL-2 effects on cancer cells, the mechanism of this action is still unclear. Some groups have reported that IL-2 can increase proliferation in some murine and human melanoma cell lines (85-90). One group reported that IL-2 at low doses in the absence of serum appeared to stimulate proliferation of some melanoma cell lines but not others during the first 24 hours, while cell growth was somewhat suppressed or not seen at higher doses around 500U/ml over the same time period [168].

IL-2 has been shown to directly inhibit the growth of human squamous cell carcinoma of the head and neck (SCCHN) both *in vitro* and in nude mice bearing SCCHN xenografts [169-172]. Growth inhibition in SCCHN cells was completely reversed by blocking with an anti-IL-2R β antibody and partially reversed by blocking with an anti-IL-2R α antibody; this indicates the importance of the intermediate affinity IL-2R for the growth suppressive effect of IL-2 in cancer cells (158). This strongly supports our data that IL-2 signals through the IL-2R β chain and has a direct growth suppressive effect on melanoma cells.

Historically, the general assumption has been that the therapeutic effects of IL-2 are a result of its immunomodulatory actions. However, it is highly likely that the anti-tumor effects of high dose IL-2 on cancer cells in responsive patients can be attributed to the direct actions of IL-2 on tumors which express the IL-2R in addition to its enhanced immune functions. There is evidence in the literature for the presence of IL-2R on cancer cells and IL-2 inhibition of cancer cell growth at high doses. The literature also confirms the positive

effects on disease processes of elevated IL-24, both in its role as a cytokine and as a tumor suppressor. Together with the data we have presented in this dissertation, this evidence supports our hypothesis that high dose IL-2 signals through IL-2R β directly causing growth suppression in some melanoma cells in an IL-24 dependent manner (Figure 15), and that the IL-24 and IL-2R β status of a tumor may therefore be useful in predicting patient response to high dose IL-2 therapy. Further studies are needed to determine the molecular mechanism for IL-2 regulation of IL-24 expression in these cells.

Additional support for IL-24 as a potential predictive marker for response to IL-2 therapy

Although we are aware that IL-24 secreted from melanoma cells may also act as a pro-Th1 type cytokine [173] by inducing secondary cytokine production in PBMCs including the proinflammatory cytokines IFN γ , IL-1 β , IL-12 and TNF α (49), consequently enhancing T cell mediated immunity by recruiting tumor infiltrating leukocytes to the site of the tumor, this project has focused specifically on the tumor growth suppressive characteristics of IL-24.

IL-24 has been shown to cause growth suppression and apoptosis in numerous different tumor cells including melanoma [144]. Melanoma cells transduced with Ad-*mda7* secrete IL-24 protein which then plays a tumor specific cytotoxic bystander role [70]. Our data have now established that high dose IL-2 causes increased IL-24 protein production in melanoma cells with IL-24 mRNA; in addition, those same melanoma cells also secrete IL-24 constitutively and do so at even higher levels following treatment with high dose IL-2. It is possible that the melanoma cells are well acclimated to survival at the concentrations of IL-24 they generate endogenously, but that the elevated levels of IL-24 produced in response to IL-2 pushes their equilibrium towards growth suppression. Therefore it is to be expected

that this additional secreted IL-24 could also have a paracrine effect by impacting neighboring cells within the tumor microenvironment. It has been reported that the IL-24 receptor chains are present on melanoma cell lines [174]. Because melanomas are so heterogeneous, it may be unlikely that all cells within a tumor will respond directly to IL-2. However, even if only a fraction of the cells are capable of responding to IL-2, the remaining unresponsive cells which likely possess the IL-24 receptor could be indirectly affected by the secreted IL-24 from responding cells. We propose that given the potential autocrine and paracrine bystander tumor growth suppressive effects of elevated IL-24 in high dose IL-2 patients, IL-24 is an excellent candidate to be a positive predictive marker for response to high dose IL-2 therapy.

Ideally, pretreatment and posttreatment biopsy or fine needle aspirate (FNA) samples from high dose IL-2 patients could be examined using immunohistochemistry techniques for IL-24 and then follow their clinical response to treatment. Alternatively, archived tissues could be obtained from metastatic melanoma patients through the MD Anderson Melanoma Core and perform a retrospective study by examining tissue from responders and nonresponders to IL-2 therapy and then correlating IL-24 staining with survival data. These data would substantiate the importance of IL-24 as a predictive marker for responsiveness to IL-2 therapy in melanoma patients. We would expect that patients who respond to high dose IL-2 treatment are more likely to express IL-24 in their melanoma tumor cells.

If showing IL-24 on patient biopsy samples by immunohistochemistry is unsuccessful, some alternative approaches for detection of protein on tissue samples include qPCR from paraffin embedded tissue, in situ hybridization in tissue, and direct tissue proteomics [175].

IL-2R β or IL-15R α coexistence with IL-24 as a predictive marker for response to IL-2 therapy

Our data demonstrated that stimulating some melanoma cells with IL-2 increases IL-24 expression via signaling through the IL-2 receptor. Blocking the IL-2R β chain in particular had the greatest effect on IL-2 upregulation of IL-24 protein expression. IL-15, which also signals through the IL-2R β chain, was likewise able to upregulate IL-24 protein expression. All of these data emphasize the essential role that IL-2R β plays in controlling IL-24 expression and subsequent tumor growth suppression in these cells. This observation is encouraging because it has been shown that several other cancers, including squamous cell carcinoma, renal cell carcinoma, and gastric carcinomas, are growth inhibited by IL-2 signaling specifically through the IL-2R β chain [114, 115]. It happens that the five melanoma cell lines tested all contained IL-2R β mRNA. However, this does not imply that all melanoma cells will have IL-2R β present. Therefore we propose that the coexistence of IL-2R β and IL-24 in melanoma cells could potentially be a stronger predictive marker of response to IL-2 than IL-24 alone.

Other groups have also shown that IL-15R α is expressed in the melanoma cell lines MELP and MELREO [176] as well as in 12 uveal melanoma cell lines [177, 178]. Secondary cytokines released by IL-2 stimulated lymphocytes include TNF α and IFN γ which are known to induce the production of IL-15. Therefore, IL-15 levels are very likely to be elevated in patients receiving high dose IL-2 therapy. Thus, patients whose melanoma tumor cells express IL-15R α might also respond better to IL-2 therapy by upregulation of IL-24.

Support for IL-15 as therapy for metastatic melanoma

IL-15 is known to be similar to IL-2 in terms of function [179, 180]. Both cytokines are capable of facilitating the manufacturing of immunoglobulins produced by B lymphocytes and induce the differentiation and proliferation of natural killer (NK) cells [180]. The principal differences between IL-2 and IL-15 are associated with the adaptive immune response. IL-2 is involved in maintaining T-Regs and decreases self-reactive T cells resulting in a more self tolerant state. IL-15 is required for maintaining highly specific T cell responses by supporting the survival of CD8+ memory T cells [181]. In a recent publication, regression of subcutaneous melanoma tumors was seen after intratumoral delivery of an IL-15 expressing plasmid [182]. Treatment with IL-15 also lacks the secondary cytokine storm response seen with IL-2 which causes its capillary leak syndrome side effects [183]. Thus dose limiting toxicity of IL-15 is considerably less than that of high dose IL-2. IL-15 may therefore be potentially promising as therapy for melanoma either alone or in combination with IL-2 or chemotherapeutics. In fact, the National Cancer Institute is currently sponsoring a Phase I trial exploring the use of recombinant hIL-15 as a treatment for metastatic malignant melanoma and metastatic renal cell carcinoma (ClinicalTrials.gov ID: NCT01021059, <http://clinicaltrials.gov/ct2/show/NCT01021059>). While this study focuses on the immunotherapeutic aspect of IL-15, once again, our data show that IL-15 has a direct effect on melanoma cells by upregulating expression of IL-24 and causing tumor cell growth suppression. By this reasoning, IL-24 also has the potential to be a promising predictive marker for response to IL-15 therapy.

Mechanism of IL-2 dependent IL-24 Upregulation in Melanoma Cell Lines

We have established that in those tumor cells which do respond to IL-2 treatment, IL-2 mediates this activity by signaling through the IL-2 receptor. It is important to elucidate the mechanism by which this upregulation of IL-24 expression occurs. We have published *in vitro* data in normal peripheral blood mononuclear cells (PBMC) that show that PHA stimulation causes IL-2 secretion which stabilizes IL-24 mRNA resulting in increased protein production [84]. It is recognized that the IL-2/IL-2 receptor interaction results in the activation of downstream Janus Kinase (Jak)-signal transducer and activator of transcription (STAT) pathways which in turn regulate gene transcription. In T cells, IL-2R β signals through Jak1 and IL-2R γ signal through Jak3. These in turn phosphorylate and activate STAT5 and STAT3.

Since STATs control gene transcription, it is possible that activation by IL-2 causes stabilization of IL-24 mRNA message via STAT activation in melanoma cell lines as has previously been reported occurs in PBMC [184]; this can be determined by real time RT-PCR. To determine whether message stabilization is occurring cells can be treated with IL-2 followed by Actinomycin D to stop any new RNA transcription. If there is message stabilization, levels of IL-24 mRNA will remain steady when measured over time by real time RT-PCR.

IL-2 induces and regulates the expression of many genes. As previously discussed, IL-2 signals via its receptor through the activation of several different pathways, including the JAK/STAT pathway and the p38 MAPK pathway [185-187]. In IL-2 activated Th1 cells, IL-2 induces TNF β production by activating the p38 MAPK pathway (in addition to the JAK/STAT pathway) [188]. Another study demonstrated that IL-1 β induces p38 MAPK

dependent expression of IL-24 in normal human keratinocytes. The study shows that p38 MAPK regulates the gene expression of IL-24 in keratinocytes by interfering with IL-24 mRNA degradation caused by 3' UTR destabilization [189]. Given these data, another possible mechanism for IL-2 regulation of IL-24 expression is by interfering with IL-24 mRNA degradation via signal transduction through the p38 MAPK pathway.

Although the three IL-24 positive cell lines we investigated all responded to high dose IL-2, it is completely possible that there exist melanoma cells which contain IL-24 mRNA but are unresponsive to IL-2. Once we understand the mechanism of IL-2 induction of IL-24 in cell lines that do respond we can investigate why the process might not work in other cells. IL-2 unresponsive IL-24 positive cells may lack functional IL-2 receptor chains, or could contain mutations or splice variants of downstream elements [178, 190]. To probe these possibilities, further downstream events along the IL-2 signaling pathways must be examined to determine if differences exist that correlate with melanoma cells' responsiveness to IL-2.

Conclusion

Based on the data contained in this dissertation and the available literature reviewed, we have presented a novel model for the direct effects of high dose IL-2 on melanoma cells. In this model, treatment with high dose IL-2 upregulates IL-24 protein expression which leads to melanoma tumor growth suppression. Currently no reliable marker exists to identify and predict the melanoma patients who are most likely to respond positively to IL-2 therapy. The results from this study offer insights into several potential predictive biomarkers for targeted high dose IL-2 therapy. Identification of such a marker is essential in order to

effectively treat these patients. IL-2 upregulation of IL-24 may be important for predicting clinical response to high dose IL-2 therapy. Potential markers include the presence of IL-24, or coexpression of IL-24 and the IL-2R β chain in melanoma cells. This study also offers evidence to support the exploration of IL-15 either alone or in combination with other treatments as a potential therapy for melanoma. We have shown it to be equally capable of causing IL-24 dependent melanoma cell growth suppression in comparison with IL-2, and the existing literature observes that IL-15 has fewer side effects and toxicity than high dose IL-2 therapy.

Cancers are incredibly complex diseases, and increasing our understanding of the molecular mechanisms of both the diseases and the treatments is essential. Selection of an appropriate therapy should be tailored to the individual patient based on his specific tumor and immunologic profile. In fact, the prevailing trend in cancer medicine is toward genetic profiling and customized courses of therapy. It is our hope that this work helps provide a predictive marker for IL-2 responsiveness and an identifiable targeted therapy for melanoma.

Reference List

- (1) Rigel DS, Friedman RJ, Kopf AW. The incidence of malignant melanoma in the United States: Issues as we approach the 21st century. *Journal of the American Academy of Dermatology* 1996 May;**34**(5):839-47.
- (2) Rigel DS. Malignant melanoma: Perspectives on incidence and its effects on awareness, diagnosis, and treatment. *Ca-A Cancer Journal for Clinicians* 1996 Jul;**46**(4):195-&.
- (3) Horner MJ, Ries LAG, Krapcho M, Neyman N, Howlader N, Altekruse SF, Feuer EJ, Huang L, Mariotto A, Miller BA, Lewis DR, Eisner MP, Stinchcomb DG, Edwards BK (eds). *SEER Cancer Statistics Review, 1975-2006*. National Cancer Institute, Bethesda, MD; 2010.
- (4) Barth A, Wanek LA, Morton DL. Prognostic factors in 1,521 melanoma patients with distant metastases [see comments]. *J Am Coll Surg* 1995 Sep;**181**(3):193-201.
- (5) Balch CM. Cutaneous Melanoma - Prognosis and Treatment Results Worldwide. *Seminars in Surgical Oncology* 1992 Nov;**8**(6):400-14.
- (6) Geller AC, Miller DR, Annas GD, Demierre MF, Gilchrest BA, Koh HK. Melanoma incidence and mortality among US whites, 1969-1999. *Jama-Journal of the American Medical Association* 2002 Oct 9;**288**(14):1719-20.

- (7) Ledouarin NM. Cell-Line Segregation During Peripheral Nervous-System Ontogeny. *Science* 1986 Mar 28;**231**(4745):1515-22.
- (8) Selleck MAJ, Scherson TY, Bronnerfraser M. Origins of Neural Crest Cell Diversity. *Developmental Biology* 1993 Sep;**159**(1):1-11.
- (9) Vancoillie G, Lambert J, Naeyaert JM. Melanocyte biology and its implications for the clinician. *European Journal of Dermatology* 1999 Apr;**9**(3):241-51.
- (10) Balch CM, Gershenwald JE, Soong SJ, Thompson JF, Atkins MB, Byrd DR, Buzaid AC, Cochran AJ, Coit DG, Ding S, Eggermont AM, Flaherty KT, Gimotty PA, Kirkwood JM, McMasters KM, Mihm MC, Jr., Morton DL, Ross MI, Sober AJ, Sondak VK. Final version of 2009 AJCC melanoma staging and classification. *J Clin Oncol* 2009 Dec 20;**27**(36):6199-206.
- (11) Lee ML, Tomsu K, Von Eschen KB. Duration of survival for disseminated malignant melanoma: results of a meta-analysis. *Melanoma Research* 2000 Feb;**10**(1):81-92.
- (12) Halliday GM, Patel A, Hunt MJ, Tefany FJ, Barnetson RS. Spontaneous regression of human melanoma/nonmelanoma skin cancer: association with infiltrating CD4+ T cells. *World J Surg* 1995 May;**19**(3):352-8.
- (13) Doyle JC, Bennett RC, Newing RK. Spontaneous Regression of Malignant-Melanoma. *Medical Journal of Australia* 1973;**2**(11):551-2.

- (14) Shu S, Cochran AJ, Huang RR, Morton DL, Maecker HT. Immune responses in the draining lymph nodes against cancer: implications for immunotherapy. *Cancer Metastasis Rev* 2006 Jun;**25**(2):233-42.
- (15) Nordlund JJ, Kirkwood JM, Forget BM, Milton G, Albert DM, Lerner AB. Vitiligo in Patients with Metastatic Melanoma - A Good Prognostic Sign. *Journal of the American Academy of Dermatology* 1983;**9**(5):689-96.
- (16) Bystryn JC, Rigel D, Friedman RJ, Kopf A. Prognostic-Significance of Hypopigmentation in Malignant-Melanoma. *Archives of Dermatology* 1987 Aug;**123**(8):1053-5.
- (17) Bystryn JC, Rigel D, Friedman RJ, Kopf A. Prognostic significance of hypopigmentation in malignant melanoma. *Arch Dermatol* 1987 Aug;**123**(8):1053-5.
- (18) Nordlund JJ, Kirkwood JM, Forget BM, Milton G, Albert DM, Lerner AB. Vitiligo in patients with metastatic melanoma: a good prognostic sign. *J Am Acad Dermatol* 1983 Nov;**9**(5):689-96.
- (19) Phan GQ, Attia P, Steinberg SM, White DE, Rosenberg SA. Factors associated with response to high-dose interleukin-2 in patients with metastatic melanoma. *Journal of Clinical Oncology* 2001 Aug 1;**19**(15):3477-82.
- (20) Atkins MB. Immunotherapy and experimental approaches for metastatic melanoma. *Hematology-Oncology Clinics of North America* 1998 Aug;**12**(4):877-+.

- (21) Gillis S, Ferm MM, Ou W, Smith KA. T-Cell Growth-Factor - Parameters of Production and A Quantitative Microassay for Activity. *Journal of Immunology* 1978;**120**(6):2027-32.
- (22) Cantrell DA, Smith KA. The Interleukin-2 T-Cell System - A New Cell-Growth Model. *Science* 1984;**224**(4655):1312-6.
- (23) Smith KA. Interleukin-2: inception, impact, and implications. *Science* 1988 May 27;**240**(4856):1169-76.
- (24) Stern JB, Smith KA. Interleukin-2 Induction of T-Cell G1 Progression and C-Myb Expression. *Science* 1986 Jul 11;**233**(4760):203-6.
- (25) Beadling C, Johnson KW, Smith KA. Isolation of Interleukin-2-Induced Immediate-Early Genes. *Proceedings of the National Academy of Sciences of the United States of America* 1993 Apr 1;**90**(7):2719-23.
- (26) Sakaguchi S, Sakaguchi N, Asano M, Itoh M, Toda M. Immunological Self-Tolerance Maintained by Activated T-Cells Expressing Il-2 Receptor Alpha-Chains (Cd25) - Breakdown of A Single Mechanism of Self-Tolerance Causes Various Autoimmune-Diseases. *Journal of Immunology* 1995 Aug 1;**155**(3):1151-64.
- (27) Thornton AM, Shevach EM. CD4(+)CD25(+) immunoregulatory T cells suppress polyclonal T cell activation in vitro by inhibiting interleukin 2 production. *Journal of Experimental Medicine* 1998 Jul 20;**188**(2):287-96.

- (28) Rosenberg SA, Lotze MT, Mule JJ. NIH conference. New approaches to the immunotherapy of cancer using interleukin-2. *Ann Intern Med* 1988 Jun;**108**(6):853-64.
- (29) Parkinson DR, Abrams JS, Wiernik PH, Rayner AA, Margolin KA, Van Echo DA, Sznol M, Dutcher JP, Aronson FR, Doroshov JH, . Interleukin-2 therapy in patients with metastatic malignant melanoma: a phase II study. *J Clin Oncol* 1990 Oct;**8**(10):1650-6.
- (30) Atkins MB, Lotze MT, Dutcher JP, Fisher RI, Weiss G, Margolin K, Abrams J, Sznol M, Parkinson D, Hawkins M, Paradise C, Kunkel L, Rosenberg SA. High-dose recombinant interleukin 2 therapy for patients with metastatic melanoma: Analysis of 270 patients treated between 1985 and 1993. *Journal of Clinical Oncology* 1999 Jul;**17**(7):2105-16.
- (31) Atkins MB, Kunkel L, Sznol M, Rosenberg SA. High-dose recombinant interleukin-2 therapy in patients with metastatic melanoma: Long-term survival update. *Cancer Journal from Scientific American* 2000 Feb;**6**:S11-S14.
- (32) Tarhini AA, Kirkwood JM, Gooding WE, Cai C, Agarwala SS. Durable complete responses with high-dose bolus interleukin-2 in patients with metastatic melanoma who have experienced progression after biochemotherapy. *Journal of Clinical Oncology* 2007 Sep 1;**25**(25):3802-7.
- (33) Whitehead RP, Ward D, Hemingway L, Hemstreet GP, Bradley E, Konrad M. Subcutaneous Recombinant Interleukin-2 in A Dose Escalating Regimen in Patients

- with Metastatic Renal-Cell Adenocarcinoma. *Cancer Research* 1990 Oct 15;**50**(20):6708-15.
- (34) Fisher RI, Rosenberg SA, Fyfe G. Long-term survival update for high-dose recombinant interleukin-2 in patients with renal cell carcinoma. *Cancer Journal from Scientific American* 2000 Feb;**6**:S55-S57.
- (35) Klapper JA, Downey SG, Smith FO, Yang JC, Hughes MS, Kammula US, Sherry RM, Royal RE, Steinberg SM, Rosenberg S. High-dose interleukin-2 for the treatment of metastatic renal cell carcinoma - A retrospective analysis of response and survival in patients treated in the Surgery Branch at the National Cancer Institute between 1986 and 2006. *Cancer* 2008 Jul 15;**113**(2):293-301.
- (36) Rosenberg SA, Lotze MT, Muul LM, Chang AE, Avis FP, Leitman S, Linehan WM, Robertson CN, Lee RE, Rubin JT, . A progress report on the treatment of 157 patients with advanced cancer using lymphokine-activated killer cells and interleukin-2 or high-dose interleukin-2 alone. *N Engl J Med* 1987 Apr 9;**316**(15):889-97.
- (37) Parmiani G, Rivoltini L, Andreola G, Carrabba M. Cytokines in cancer therapy. *Immunol Lett* 2000 Sep 15;**74**(1):41-4.
- (38) Margolin KA, Rayner AA, Hawkins MJ, Atkins MB, Dutcher JP, Fisher RI, Weiss GR, Doroshow JH, Jaffe HS, Roper M, Parkinson DR, Wiernik PH, Creekmore SP, Boldt DH. Interleukin-2 and Lymphokine-Activated Killer Cell Therapy of Solid Tumors - Analysis of Toxicity and Management Guidelines. *Journal of Clinical Oncology* 1989 Apr;**7**(4):486-98.

- (39) Dutcher JP, Creekmore S, Weiss GR, Margolin K, Markowitz AB, Roper M, Parkinson D, Ciobanu N, Fisher RI, Boldt DH, Doroshow JH, Rayner AA, Hawkins M, Atkins M. A Phase-I Study of Interleukin-2 and Lymphokine-Activated Killer Cells in Patients with Metastatic Malignant-Melanoma. *Journal of Clinical Oncology* 1989 Apr;**7**(4):477-85.
- (40) Grimm EA, Robb RJ, Roth JA, Neckers LM, Lachman LB, Wilson DJ, Rosenberg SA. Lymphokine-activated killer cell phenomenon. III. Evidence that IL-2 is sufficient for direct activation of peripheral blood lymphocytes into lymphokine-activated killer cells. *J Exp Med* 1983 Oct 1;**158**(4):1356-61.
- (41) Grimm EA, Mazumder A, Zhang HZ, Rosenberg SA. Lymphokine-activated killer cell phenomenon. Lysis of natural killer-resistant fresh solid tumor cells by interleukin 2-activated autologous human peripheral blood lymphocytes. *J Exp Med* 1982 Jun 1;**155**(6):1823-41.
- (42) Dutcher JP, Creekmore S, Weiss GR, Margolin K, Markowitz AB, Roper M, Parkinson D, Ciobanu N, Fisher RI, Boldt DH, Doroshow JH, Rayner AA, Hawkins M, Atkins M. A Phase-I Study of Interleukin-2 and Lymphokine-Activated Killer Cells in Patients with Metastatic Malignant-Melanoma. *Journal of Clinical Oncology* 1989 Apr;**7**(4):477-85.
- (43) Lotze MT, Matory YL, Rayner AA, Ettinghausen SE, Vetto JT, Seipp CA, Rosenberg SA. Clinical effects and toxicity of interleukin-2 in patients with cancer. *Cancer* 1986 Dec 15;**58**(12):2764-72.

- (44) Lotze MT, Matory YL, Ettinghausen SE, Rayner AA, Sharrow SO, Seipp CA, Custer MC, Rosenberg SA. In vivo administration of purified human interleukin 2. II. Half life, immunologic effects, and expansion of peripheral lymphoid cells in vivo with recombinant IL 2. *J Immunol* 1985 Oct;**135**(4):2865-75.
- (45) West WH, Tauer KW, Yannelli JR, Marshall GD, Orr DW, Thurman GB, Oldham RK. Constant-infusion recombinant interleukin-2 in adoptive immunotherapy of advanced cancer. *N Engl J Med* 1987 Apr 9;**316**(15):898-905.
- (46) Siegel JP, Puri RK. Interleukin-2 Toxicity. *Journal of Clinical Oncology* 1991 Apr;**9**(4):694-704.
- (47) Quan WDY, Quan FM. Outpatient experience with moderate dose bolus interleukin-2 in metastatic malignant melanoma and kidney cancer. *Journal of Immunotherapy* 2003 May;**26**(3):286-90.
- (48) Caudell EG, Mumm JB, Poindexter N, Ekmekcioglu S, Mhashilkar AM, Yang XH, Retter MW, Hill P, Chada S, Grimm EA. The protein product of the tumor suppressor gene, melanoma differentiation-associated gene 7, exhibits immunostimulatory activity and is designated IL-24. *J Immunol* 2002 Jun 15;**168**(12):6041-6.
- (49) Chada S, Sutton RB, Ekmekcioglu S, Ellerhorst J, Mumm JB, Leitner WW, Yang HY, Sahin AA, Hunt KK, Fuson KL, Poindexter N, Roth JA, Ramesh R, Grimm EA, Mhashilkar AM. MDA-7/IL-24 is a unique cytokine--tumor suppressor in the IL-10 family. *Int Immunopharmacol* 2004 May;**4**(5):649-67.

- (50) Jiang H, Su ZZ, Lin JJ, Goldstein NI, Young CSÁH, Fisher PB. The melanoma differentiation associated gene mda-7 suppresses cancer cellágrowth. PNAS 1996 Aug 20;**93**(17):9160-5.
- (51) Su ZZ, Madireddi MT, Lin JJ, Young CSÁH, Kitada S, Reed JC, Goldstein NI, Fisher PB. The cancer growth suppressor gene mda-7 selectively induces apoptosis in human breast cancer cells and inhibits tumor growth in nude mice. PNAS 1998 Nov 24;**95**(24):14400-5.
- (52) Wang M, Tan Z, Zhang R, Kotenko SV, Liang P. Interleukin 24 (MDA-7/MOB-5) Signals through Two Heterodimeric Receptors, IL-22R1/IL-20R2 and IL-20R1/IL-20R2. J Biol Chem 2002 Feb 22;**277**(9):7341-7.
- (53) Wang M, Liang P. Interleukin-24 and its receptors. Immunology 2005 Feb;**114**(2):166-70.
- (54) Wolk K, Haugen HS, Xu W, Witte E, Waggie K, Anderson M, Vom BE, Witte K, Warszawska K, Philipp S, Johnson-Leger C, Volk HD, Sterry W, Sabat R. IL-22 and IL-20 are key mediators of the epidermal alterations in psoriasis while IL-17 and IFN-gamma are not. J Mol Med 2009 May;**87**(5):523-36.
- (55) Chada S, Mhashilkar AM, Ramesh R, Mumm JB, Sutton RB, Bocangel D, Zheng M, Grimm EA, Ekmekcioglu S. Bystander activity of Ad-mda7: human MDA-7 protein kills melanoma cells via an IL-20 receptor-dependent but STAT3-independent mechanism. Mol Ther 2004 Dec;**10**(6):1085-95.

- (56) Fisher PB, Gopalkrishnan RV, Chada S, Ramesh R, Grimm EA, Rosenfeld MR, Curiel DT, Dent P. mda-7/IL-24, a novel cancer selective apoptosis inducing cytokine gene: from the laboratory into the clinic. *Cancer Biol Ther* 2003 Jul;**2**(4 Suppl 1):S23-S37.
- (57) Huang EY. Genomic structure, chromosomal localization and expression profile of a novel melanoma differentiation associated (mda-7) gene with cancer specific growth suppressing and apoptosis inducing properties. *Oncogene* 2001;**20**:7051-3.
- (58) Wolk K, Kunz S, Asadullah K, Sabat R. Cutting edge: immune cells as sources and targets of the IL-10 family members? *J Immunol* 2002 Jun 1;**168**(11):5397-402.
- (59) Poindexter N, Williams R, Powis G, Chada S, Grimm EA. IL-24 and Its Role in Wound Healing. *Journal of Immunotherapy* 30[8], 877. 2007.
Ref Type: Abstract
- (60) Poindexter NJ, Grimm EA. Interleukin-24 Regulation of Homeostasis in the Skin Microenvironment During Inflammation. *Journal of Immunotherapy* 2009 Nov;**32**(9):960.
- (61) Ekmekcioglu S, Ellerhorst J, Mhashilkar AM, Sahin AA, Read CM, Prieto VG, Chada S, Grimm EA. Down-regulated melanoma differentiation associated gene (mda-7) expression in human melanomas. *Int J Cancer* 2001 Oct 1;**94**(1):54-9.
- (62) Ellerhorst JA, Prieto VG, Ekmekcioglu S, Broemeling L, Yekell S, Chada S, Grimm EA. Loss of MDA-7 expression with progression of melanoma. *J Clin Oncol* 2002 Feb 15;**20**(4):1069-74.

- (63) Ekmekcioglu S, Ellerhorst JA, Mumm JB, Zheng M, Broemeling L, Prieto VG, Stewart AL, Mhashilkar AM, Chada S, Grimm EA. Negative Association of Melanoma Differentiation-associated Gene (mda-7) and Inducible Nitric Oxide Synthase (iNOS) in Human Melanoma: MDA-7 Regulates iNOS Expression in Melanoma Cells. *Mol Cancer Ther* 2003 Jan 1;**2**(1):9-17.
- (64) Saeki T, Mhashilkar A, Swanson X, Zou-Yang XH, Sieger K, Kawabe S, Branch CD, Zumstein L, Meyn RE, Roth JA, Chada S, Ramesh R. Inhibition of human lung cancer growth following adenovirus-mediated mda-7 gene expression in vivo. *Oncogene* 2002 Jul 4;**21**(29):4558-66.
- (65) Saeki T, Mhashilkar A, Chada S, Branch C, Roth JA, Ramesh R. Tumor-suppressive effects by adenovirus-mediated mda-7 gene transfer in non-small cell lung cancer cell in vitro. *Gene Ther* 2000 Dec;**7**(23):2051-7.
- (66) Chada S, Bocangel D, Ramesh R, Grimm EA, Mumm JB, Mhashilkar AM, Zheng M. Ad-mda7 kills pancreatic cancer cells by inhibition of the Wnt/P13K signaling pathways: evidence of IL-20 receptor mediated bystander activity against pancreatic cancer. *Molecular Therapy* 2005.
- (67) Jiang H, Su ZZ, Lin JJ, Goldstein NI, Young CSÁH, Fisher PB. The melanoma differentiation associated gene mda-7 suppresses cancer cellágrowth. *PNAS* 1996 Aug 20;**93**(17):9160-5.
- (68) Ramesh R, Mhashilkar AM, Tanaka F, Saito Y, Branch CD, Sieger K, Mumm JB, Stewart AL, Boquoi A, Dumoutier L, Grimm EA, Renauld JC, Kotenko S, Chada S.

- Melanoma differentiation-associated gene 7/interleukin (IL)-24 is a novel ligand that regulates angiogenesis via the IL-22 receptor. *Cancer Res* 2003 Aug 15; **63**(16):5105-13.
- (69) Saeki T, Mhashilkar A, Swanson X, Zou-Yang XH, Sieger K, Kawabe S, Branch CD, Zumstein L, Meyn RE, Roth JA, Chada S, Ramesh R. Inhibition of human lung cancer growth following adenovirus-mediated mda-7 gene expression in vivo. *Oncogene* 2002 Jul 4; **21**(29):4558-66.
- (70) Su Z, Emdad L, Sauane M, Lebedeva IV, Sarkar D, Gupta P, James CD, Randolph A, Valerie K, Walter MR, Dent P, Fisher PB. Unique aspects of mda-7/IL-24 antitumor bystander activity: establishing a role for secretion of MDA-7/IL-24 protein by normal cells. *Oncogene* 2005 Nov 17; **24**(51):7552-66.
- (71) Yacoub A, Mitchell C, Lebedeva IV, Sarkar D, Su ZZ, McKinstry R, Gopalkrishnan RV, Grant S, Fisher PB, Dent P. mda-7 (IL-24) Inhibits growth and enhances radiosensitivity of glioma cells in vitro via JNK signaling. *Cancer Biol Ther* 2003 Jul; **2**(4):347-53.
- (72) Su ZZ, Lebedeva IV, Sarkar D, Gopalkrishnan RV, Sauane M, Sigmon C, Yacoub A, Valerie K, Dent P, Fisher PB. Melanoma differentiation associated gene-7, mda-7/IL-24, selectively induces growth suppression, apoptosis and radiosensitization in malignant gliomas in a p53-independent manner. *Oncogene* 2003 Feb 27; **22**(8):1164-80.

- (73) Su ZZ, Lebedeva IV, Sarkar D, Emdad L, Gupta P, Kitada S, Dent P, Reed JC, Fisher PB. Ionizing radiation enhances therapeutic activity of mda-7/IL-24: overcoming radiation- and mda-7/IL-24-resistance in prostate cancer cells overexpressing the antiapoptotic proteins bcl-x(L) or bcl-2. *Oncogene* 2006 Apr 13;**25**(16):2339-48.
- (74) Emdad L, Sarkar D, Lebedeva IV, Su ZZ, Gupta P, Mahasreshti PJ, Dent P, Curiel DT, Fisher PB. Ionizing radiation enhances adenoviral vector expressing mda-7/IL-24-mediated apoptosis in human ovarian cancer. *Journal of Cellular Physiology* 2006 Aug;**208**(2):298-306.
- (75) Chada S, Mhashilkar AM, Liu Y, Nishikawa T, Bocangel D, Zheng M, Vorburger SA, Pataer A, Swisher SG, Ramesh R, Kawase K, Meyn RE, Hunt KK. mda-7 gene transfer sensitizes breast carcinoma cells to chemotherapy, biologic therapies and radiotherapy: correlation with expression of bcl-2 family members. *Cancer Gene Ther* 2006 May;**13**(5):490-502.
- (76) Nishikawa T, Ramesh R, Munshi A, Chada S, Meyn RE. Adenovirus-mediated mda-7 (IL24) gene therapy suppresses angiogenesis and sensitizes NSCLC xenograft tumors to radiation. *Mol Ther* 2004 Jun;**9**(6):818-28.
- (77) Kawabe S, Nishikawa T, Munshi A, Roth JA, Chada S, Meyn RE. Adenovirus-mediated mda-7 gene expression radiosensitizes non-small cell lung cancer cells via TP53-independent mechanisms. *Mol Ther* 2002 Nov;**6**(5):637-44.
- (78) Cunningham CC, Chada S, Merritt JA, Tong A, Senzer N, Zhang Y, Mhashilkar A, Parker K, Vukelja S, Richards D, Hood J, Coffee K, Nemunaitis J. Clinical and local

- biological effects of an intratumoral injection of mda-7 (IL24; INGN 241) in patients with advanced carcinoma: a phase I study. *Mol Ther* 2005 Jan;**11**(1):149-59.
- (79) Tong AW, Nemunaitis J, Su D, Zhang Y, Cunningham C, Senzer N, Netto G, Rich D, Mhashilkar A, Parker K, Coffee K, Ramesh R, Ekmekcioglu S, Grimm EA, van Wart HJ, Merritt J, Chada S. Intratumoral injection of INGN 241, a nonreplicating adenovector expressing the melanoma-differentiation associated gene-7 (mda-7/IL24): biologic outcome in advanced cancer patients. *Mol Ther* 2005 Jan;**11**(1):160-72.
- (80) Lebedeva IV, Sauane M, Gopalkrishnan RV, Sarkar D, Su ZZ, Gupta P, Nemunaitis J, Cunningham C, Yacoub A, Dent P, Fisher PB. mda-7/IL-24: Exploiting cancer's Achilles' heel. *Molecular Therapy* 2005 Jan;**11**(1):4-18.
- (81) Radny P, Caroli UM, Bauer J, Paul T, Schlegel C, Eigentler TK, Weide B, Schwarz M, Garbe C. Phase II trial of intralesional therapy with interleukin-2 in soft-tissue melanoma metastases. *British Journal of Cancer* 2003 Nov 3;**89**(9):1620-6.
- (82) Chada S, Cunningham C, Zhang Y, Su D, Mhashilkar A, Ekmekcioglu S, Grimm E, Wilson D, Merritt J, Coffee K, Nemunaitis J, Tong AW. INGN 241 (Ad-mda7) induces widespread apoptosis and activates the immune system in patients with advanced cancer. *Molecular Therapy* 2003 May;**7**(5):S446.
- (83) Emdad L, Lebedeva IV, Su ZZ, Gupta P, Sauane M, Dash R, Grant S, Dent P, Curiel DT, Sarkar D, Fisher PB. Historical perspective and recent insights into our

- understanding of the molecular and biochemical basis of the antitumor properties of mda-7/IL-24. *Cancer Biology & Therapy* 2009 Mar 1;**8**(5):402-11.
- (84) Poindexter NJ, Walch ET, Chada S, Grimm EA. Cytokine induction of interleukin-24 in human peripheral blood mononuclear cells. *J Leukoc Biol* 2005 Sep;**78**(3):745-52.
- (85) deGaldeano AG, Boyano MD, SmithZubiaga I, Canavate ML. B16F10 murine melanoma cells express interleukin-2 and a functional interleukin-2 receptor. *Tumor Biology* 1996 May;**17**(3):155-67.
- (86) Garcia-Vazquez MD, Boyano MD, Canavate ML, Gardezabal J, de Galdeano AG, Lopez-Michelena T, Raton JA, Izu R, az-Ramon JL, az-Perez JL. Interleukin-2 enhances the growth of human melanoma cells derived form primary but not from metastatic tumours. *Eur Cytokine Netw* 2000 Dec;**11**(4):654-61.
- (87) He YG, Mayhew E, Mellon J, Niederkorn JY. Expression and possible function of IL-2 and IL-15 receptors on human uveal melanoma cells. *Investigative Ophthalmology & Visual Science* 2004 Dec;**45**(12):4240-6.
- (88) Plaisance S, Rubinstein E, Alileche A, Han DS, Sahraoui Y, Mingari MC, Bellomo R, Rimoldi D, Colombo MP, Jasmin C, Carrel S, Azzarone B. Human-Melanoma Cells Express A Functional Interleukin-2 Receptor. *International Journal of Cancer* 1993 Aug 19;**55**(1):164-70.
- (89) Mcmillan DN, Kernohan NM, Flett ME, Heys SD, Deehan DJ, Sewell HF, Walker F, Eremin O. Interleukin-2 Receptor Expression and Interleukin-2 Localization in Human Solid Tumor-Cells In-Situ and In-Vitro - Evidence for A Direct Role in the

- Regulation of Tumor-Cell Proliferation. *International Journal of Cancer* 1995 Mar 16;**60**(6):766-72.
- (90) Alileche A, Plaisance S, Han DS, Rubinstein E, Mingari C, Bellomo R, Jasmin C, Azzarone B. Human-Melanoma Cell-Line M14 Secretes A Functional Interleukin-2. *Oncogene* 1993 Jul;**8**(7):1791-6.
- (91) Meazza R, Marciano S, Sforzini S, Orengo AM, Coppolecchia M, Musiani P, Ardizzoni A, Santi L, Azzarone B, Ferrini S. Analysis of IL-2 receptor expression and of the biological effects of IL-2 gene transfection in small-cell lung cancer. *British Journal of Cancer* 1996 Sep;**74**(5):788-95.
- (92) Weidmann E, Sacchi M, Plaisance S, Heo DS, Yasumura S, Lin WC, Johnson JT, Herberman RB, Azzarone B, Whiteside TL. Receptors for Interleukin-2 on Human Squamous-Cell Carcinoma Cell-Lines and Tumor Insitu. *Cancer Research* 1992 Nov 1;**52**(21):5963-70.
- (93) Margolin KA, Rayner AA, Hawkins MJ, Atkins MB, Dutcher JP, Fisher RI, Weiss GR, Doroshow JH, Jaffe HS, Roper M, Parkinson DR, Wiernik PH, Creekmore SP, Boldt DH. Interleukin-2 and Lymphokine-Activated Killer Cell Therapy of Solid Tumors - Analysis of Toxicity and Management Guidelines. *Journal of Clinical Oncology* 1989 Apr;**7**(4):486-98.
- (94) Dutcher JP, Creekmore S, Weiss GR, Margolin K, Markowitz AB, Roper M, Parkinson D, Ciobanu N, Fisher RI, Boldt DH, Doroshow JH, Rayner AA, Hawkins M, Atkins M. A Phase-Ii Study of Interleukin-2 and Lymphokine-Activated Killer

- Cells in Patients with Metastatic Malignant-Melanoma. *Journal of Clinical Oncology* 1989 Apr;**7**(4):477-85.
- (95) Konrad MW, Hemstreet G, Hersh EM, Mansell PWA, Mertelsmann R, Kolitz JE, Bradley EC. Pharmacokinetics of Recombinant Interleukin-2 in Humans. *Cancer Research* 1990 Apr 1;**50**(7):2009-17.
- (96) Panelli MC, White R, Foster M, Martin B, Wang E, Smith K, Marincola FM. Forecasting the cytokine storm following systemic interleukin (IL)-2 administration. *J Transl Med* 2004 Jun 2;**2**(1):17.
- (97) Herlyn M. Human-Melanoma - Development and Progression. *Cancer and Metastasis Reviews* 1990 Sep;**9**(2):101-12.
- (98) Cornil I, Theodorescu D, Man S, Herlyn M, Jambrosic J, Kerbel RS. Fibroblast cell interactions with human melanoma cells affect tumor cell growth as a function of tumor progression. *Proc Natl Acad Sci U S A* 1991 Jul 15;**88**(14):6028-32.
- (99) Lu C, Rak JW, Kobayashi H, Kerbel RS. Increased Resistance to Oncostatin M-Induced Growth-Inhibition of Human-Melanoma Cell-Lines Derived from Advanced-Stage Lesions. *Cancer Research* 1993 Jun 15;**53**(12):2708-11.
- (100) Zhang Q, Shen Q, Celestino J, Milam MR, Westin SN, Lacour RA, Meyer LA, Shipley GL, Davies PJA, Deng L, McCampbell AS, Broaddus RR, Lu KH. Enhanced estrogen-induced proliferation in obese rat endometrium. *American Journal of Obstetrics and Gynecology* 2009 Feb;**200**(2).

- (101) Ekmekcioglu S, Ellerhorst J, Mhashilkar AM, Sahin AA, Read CM, Prieto VG, Chada S, Grimm EA. Down-regulated melanoma differentiation associated gene (mda-7) expression in human melanomas. *Int J Cancer* 2001 Oct 1;**94**(1):54-9.
- (102) Ekmekcioglu S, Ellerhorst JA, Mumm JB, Zheng M, Broemeling L, Prieto VG, Stewart AL, Mhashilkar AM, Chada S, Grimm E.A. Negative association of melanoma differentiation associated gene (mda-7) and inducible nitric oxide synthase (iNOS) in human melanoma: MDA-7 regulated iNOS expression in melanoma cells. *Mol.Cancer.Ther.* 2, 9-17. 2003.
Ref Type: Generic
- (103) Ellerhorst JA, Prieto VG, Ekmekcioglu S, Broemeling L, Yekell S, Chada S, Grimm EA. Loss of MDA-7 expression with progression of melanoma. *J Clin Oncol* 2002 Feb 15;**20**(4):1069-74.
- (104) Molteni M, Marabella D, Orlandi C, Rossetti C. Melanoma cell lines are responsive in vitro to lipopolysaccharide and express TLR-4. *Cancer Lett* 2006 Apr 8;**235**(1):75-83.
- (105) Mhashilkar AM, Schrock RD, Hindi M, Liao J, Sieger K, Kourouma F, Zou-Yang XH, Onishi E, Takh O, Vedvick TS, Fanger G, Stewart L, Watson GJ, Snary D, Fisher PB, Saeki T, Roth JA, Ramesh R, Chada S. Melanoma differentiation associated gene-7 (mda-7): a novel anti-tumor gene for cancer gene therapy. *Mol Med* 2001 Apr;**7**(4):271-82.

- (106) Sieger KA, Mhashilkar AM, Stewart A, Sutton RB, Strube RW, Chen SY, Pataer A, Swisher SG, Grimm EA, Ramesh R, Chada S. The tumor suppressor activity of MDA-7/IL-24 is mediated by intracellular protein expression in NSCLC cells. *Mol Ther* 2004 Mar;**9**(3):355-67.
- (107) Wang M, Tan Z, Zhang R, Kotenko SV, Liang P. Interleukin 24 (MDA-7/MOB-5) signals through two heterodimeric receptors, IL-22R1/IL-20R2 and IL-20R1/IL-20R2. *J Biol Chem* 2002 Mar 1;**277**(9):7341-7.
- (108) Nelson BH, Willerford DM. Biology of the interleukin-2 receptor. *Adv Immunol* 1998;**70**:1-81.
- (109) Taniguchi T, Minami Y. The IL-2/IL-2 receptor system: a current overview. *Cell* 1993 Apr 9;**73**(1):5-8.
- (110) Waldmann TA. The Multi-Subunit Interleukin-2 Receptor. *Annual Review of Biochemistry* 1989;**58**:875-911.
- (111) Gaffen SL. Signaling domains of the interleukin 2 receptor. *Cytokine* 2001 Apr 21;**14**(2):63-77.
- (112) Giri JG, Ahdieh M, Eisenman J, Shanebeck K, Grabstein K, Kumaki S, Namen A, Park LS, Cosman D, Anderson D. Utilization of the Beta-Chain and Gamma-Chain of the IL-2 Receptor by the Novel Cytokine-IL-15. *Embo Journal* 1994 Jun 15;**13**(12):2822-30.

- (113) Bamford RN, Grant AJ, Burton JD, Peters C, Kurys G, Goldman CK, Brennan J, Roessler E, Waldmann TA. The Interleukin (Il)-2 Receptor-Beta Chain Is Shared by Il-2 and A Cytokine, Provisionally Designated Il-T, That Stimulates T-Cell Proliferation and the Induction of Lymphokine-Activated Killer-Cells. Proceedings of the National Academy of Sciences of the United States of America 1994 May 24;**91**(11):4940-4.
- (114) Weidmann E, Sacchi M, Plaisance S, Heo DS, Yasumura S, Lin WC, Johnson JT, Herberman RB, Azzarone B, Whiteside TL. Receptors for Interleukin-2 on Human Squamous-Cell Carcinoma Cell-Lines and Tumor Insitu. Cancer Research 1992 Nov 1;**52**(21):5963-70.
- (115) Yasumura S, Lin WC, Weidmann E, Hebda P, Whiteside TL. Expression of Interleukin-2 Receptors on Human Carcinoma Cell-Lines and Tumor-Growth Inhibition by Interleukin-2. International Journal of Cancer 1994 Oct 15;**59**(2):225-34.
- (116) Takeuchi H, Fujimoto A, Hoon DSB. Detection of mitochondrial DNA alterations in plasma of malignant melanoma patients. Circulating Nucleic Acids in Plasma/Serum Iii and Serum Proteomics 2004;**1022**:50-4.
- (117) Copeland WC, Wachsman JT, Johnson FM, Penta JS. Mitochondrial DNA alterations in cancer. Cancer Investigation 2002;**20**(4):557-69.

- (118) Deichmann M, Kahle B, Benner A, Thome M, Helmke B, Naher H. Somatic mitochondrial mutations in melanoma resection specimens. *International Journal of Oncology* 2004 Jan;**24**(1):137-41.
- (119) Gupta P, Su ZZ, Lebedeva IV, Sarkar D, Sauane M, Emdad L, Bachelor MA, Grant S, Curiel DT, Dent P, Fisher PB. mda-7/IL-24: Multifunctional cancer-specific apoptosis-inducing cytokine. *Pharmacology & Therapeutics* 2006 Sep;**111**(3):596-628.
- (120) McKenzie T, Liu Y, Fanale M, Swisher SG, Chada S, Hunt KK. Combination therapy of Ad-mda7 and trastuzumab increases cell death in Her-2/neu-overexpressing breast cancer cells. *Surgery* 2004 Aug;**136**(2):437-42.
- (121) Gopalan B, Shanker M, Chada S, Ramesh R. MDA-7/IL-24 suppresses human ovarian carcinoma growth in vitro and in vivo. *Molecular Cancer* 2007 Feb 2;**6**.
- (122) Lebedeva IV, Sarkar D, Su ZZ, Gopalkrishnan RV, Athar M, Randolph A, Valerie K, Dent P, Fisher PB. Molecular target-based therapy of pancreatic cancer. *Cancer Research* 2006 Feb 15;**66**(4):2403-13.
- (123) Ramesh R, Ito I, Saito Y, Wu Z, Mhashikar AM, Wilson DR, Branch CD, Roth JA, Chada S. Local and systemic inhibition of lung tumor growth after nanoparticle-mediated mda-7/IL-24 gene delivery. *DNA Cell Biol* 2004 Dec;**23**(12):850-7.
- (124) Zheng M, Bocangel D, Doneske B, Mhashikar A, Ramesh R, Hunt KK, Ekmekcioglu S, Sutton RB, Poindexter N, Grimm EA, Chada S. Human interleukin

- 24 (MDA-7/IL-24) protein kills breast cancer cells via the IL-20 receptor and is antagonized by IL-10. *Cancer Immunol Immunother* 2007 Feb;**56**(2):205-15.
- (125) Chen WY, Cheng YT, Lei HY, Chang CP, Wang CW, Chang MS. IL-24 inhibits the growth of hepatoma cells in vivo. *Genes and Immunity* 2005 Sep;**6**(6):493-9.
- (126) Jiang HP, Su ZZ, Lin JJ, Goldstein NI, Young CSH, Fisher PB. The melanoma differentiation associated gene mda-7 suppresses cancer cell growth. *Proceedings of the National Academy of Sciences of the United States of America* 1996 Aug 20;**93**(17):9160-5.
- (127) Chan JR, Blumenschein W, Murphy E, Diveu C, Wiekowski M, Abbondanzo S, Lucian L, Geissler R, Brodie S, Kimball AB, Gorman DM, Smith K, Malefyt RD, Kastelein RA, McClanahan TK, Bowman EP. IL-23 stimulates epidermal hyperplasia via TNF and IL-20R2-dependent mechanisms with implications for psoriasis pathogenesis. *Journal of Experimental Medicine* 2006 Nov 27;**203**(12):2577-87.
- (128) Sa SM, Valdez PA, Wu J, Jung K, Zhong F, Hall L, Kasman I, Winer J, Modrusan Z, Danilenko DM, Ouyang W. The effects of IL-20 subfamily cytokines on reconstituted human epidermis suggest potential roles in cutaneous innate defense and pathogenic adaptive immunity in psoriasis. *J Immunol* 2007 Feb 15;**178**(4):2229-40.
- (129) Soo C, Shaw WW, Freymiller E, Longaker MT, Bertolami CN, Chiu R, Tieu A, Ting K. Cutaneous rat wounds express c49a, a novel gene with homology to the human melanoma differentiation associated gene, mda-7. *Journal of Cellular Biochemistry* 1999 Jul 1;**74**(1):1-10 1999;**74**(1):1-10.

- (130) Blumberg H, Conklin D, Xu WF, Grossmann A, Brender T, Carollo S, Eagan M, Foster D, Haldeman BA, Hammond A, Haugen H, Jelinek L, Kelly JD, Madden K, Maurer MF, Parrish-Novak J, Prunkard D, Sexson S, Sprecher C, Waggle K, West J, Whitmore TE, Yao L, Kuechle MK, Dale BA, Chandrasekher YA. Interleukin 20: discovery, receptor identification, and role in epidermal function. *Cell* 2001 Jan 12;**104**(1):9-19.
- (131) Romer J, Hasselager E, Norby PL, Steiniche T, Thorn CJ, Kragballe K. Epidermal overexpression of interleukin-19 and -20 mRNA in psoriatic skin disappears after short-term treatment with cyclosporine a or calcipotriol. *J Invest Dermatol* 2003 Dec;**121**(6):1306-11.
- (132) Koks S, Kingo K, Vabrit K, Ratsep R, Karelson M, Silm H, Vasar E. Possible relations between the polymorphisms of the cytokines IL-19, IL-20 and IL-24 and plaque-type psoriasis. *Genes and Immunity* 2005 Aug;**6**(5):407-15.
- (133) Kingo K, Mossner R, Koks S, Ratsep R, Kruger U, Vasar E, Reich K, Silm H. Association analysis of IL19, IL20 and IL24 genes in palmoplantar pustulosis. *British Journal of Dermatology* 2007 Apr;**156**(4):646-52.
- (134) Poindexter NJ, Williams RR, Powis G, Jen E, Caudle AS, Chada S, Grimm E.A. IL-24 is Expressed During Wound Repair and Inhibits TGF α induced Migration and Proliferation of Keratinocytes. *Exp Dermatol*. In press 2010.
- (135) Wu B, Huang CH, Kato-Maeda M, Hopewell PC, Daley CL, Krensky AM, Clayberger C. Messenger RNA expression of IL-8, FOXP3, and IL-12 beta

- differentiates latent tuberculosis infection from disease. *Journal of Immunology* 2007 Mar 15;**178**(6):3688-94.
- (136) Wu B, Huang C, Kato-Maeda M, Hopewell PC, Daley CL, Krensky AM, Clayberger C. IL-24 modulates IFN-gamma expression in patients with tuberculosis. *Immunol Lett* 2008 Apr 15;**117**(1):57-62.
- (137) Kaufmann SHE. Is the development of a new tuberculosis vaccine possible? *Nature Medicine* 2000 Sep;**6**(9):955-60.
- (138) Casanova JL, Abel L. Genetic dissection of immunity to mycobacteria: The human model. *Annual Review of Immunology* 2002;**20**:581-620.
- (139) Garn H, Schmidt A, Grau V, Stumpf S, Kaufmann A, Becker M, Gemsa D, Siese A. IL-24 is expressed by rat and human macrophages. *Immunobiology* 2002 Jul;**205**(3):321-34.
- (140) Wu B, Huang CH, Garcia L, Ponce de Leon A, Sifuentes Osornio J, Bobadilla-del-Valle M, Ferreira L, Canizales S, Small P, Kato-Maeda M, Krens AM, Clayberger C. Unique gene expression profiles in infants vaccinated with different strains of *Mycobacterium bovis* bacille Calmette-Guerin. *Infection and Immunity* 2007 Jul;**75**(7):3658-64.
- (141) Wu B, Huang CH, Kato-Maeda M, Hopewell PC, Daley CL, Krensky AM, Clayberger C. Messenger RNA expression of IL-8, FOXP3, and IL-12 beta differentiates latent tuberculosis infection from disease. *Journal of Immunology* 2007 Mar 15;**178**(6):3688-94.

- (142) Lebedeva IV, Sarkar D, Su ZZ, Gopalkrishnan RV, Athar M, Randolph A, Valerie K, Dent P, Fisher PB. Molecular target-based therapy of pancreatic cancer. *Cancer Res* 2006 Feb 15;**66**(4):2403-13.
- (143) Ramesh R, Ito I, Saito Y, Wu Z, Mhashikar AM, Wilson DR, Branch CD, Roth JA, Chada S. Local and systemic inhibition of lung tumor growth after nanoparticle-mediated mda-7/IL-24 gene delivery. *DNA Cell Biol* 2004 Dec;**23**(12):850-7.
- (144) Gopalan B, Shanker M, Chada S, Ramesh R. MDA-7/IL-24 suppresses human ovarian carcinoma growth in vitro and in vivo. *Mol Cancer* 2007;**6**:11.
- (145) Lebedeva IV, Sauane M, Gopalkrishnan RV, Sarkar D, Su ZZ, Gupta P, Nemunaitis J, Cunningham C, Yacoub A, Dent P, Fisher PB. mda-7/IL-24: Exploiting cancer's Achilles' heel. *Molecular Therapy* 2005 Jan;**11**(1):4-18.
- (146) Radny P, Caroli UM, Bauer J, Paul T, Schlegel C, Eigentler TK, Weide B, Schwarz M, Garbe C. Phase II trial of intralesional therapy with interleukin-2 in soft-tissue melanoma metastases. *British Journal of Cancer* 2003 Nov 3;**89**(9):1620-6.
- (147) Chada S, Cunningham C, Zhang Y, Su D, Mhashikar A, Ekmekcioglu S, Grimm E, Wilson D, Merritt J, Coffee K, Nemunaitis J, Tong AW. INGN 241 (Ad-mda7) induces widespread apoptosis and activates the immune system in patients with advanced cancer. *Molecular Therapy* 2003 May;**7**(5):S446.
- (148) Jakowlew SB. Transforming growth factor-beta in cancer and metastasis. *Cancer and Metastasis Reviews* 2006 Sep;**25**(3):435-57.

- (149) Bierie B, Moses HL. TGF-beta and cancer. *Cytokine & Growth Factor Reviews* 2006 Feb;**17**(1-2):29-40.
- (150) Elliott RL, Blobe GC. Role of transforming growth factor beta in human cancer. *Journal of Clinical Oncology* 2005 Mar 20;**23**(9):2078-93.
- (151) Cassar L, Li H, Jiang FX, Liu JP. TGF-beta induces telomerase-dependent pancreatic tumor cell cycle arrest. *Mol Cell Endocrinol* 2010 May 14;**320**(1-2):97-105.
- (152) Markowitz S, Wang J, Myeroff L, Parsons R, Sun LZ, Lutterbaugh J, Fan RS, Zborowska E, Kinzler KW, Vogelstein B, Brattain M, Willson JKV. Inactivation of the Type-Ii Tgf-Beta Receptor in Colon-Cancer Cells with Microsatellite Instability. *Science* 1995 Jun 2;**268**(5215):1336-8.
- (153) Xu WQ, Jiang XC, Zheng L, Yu YY, Tang JM. Expression of TGF-beta 1, T beta RII and Smad4 in colorectal carcinoma. *Experimental and Molecular Pathology* 2007 Jun;**82**(3):284-91.
- (154) Xu YF, Pasche B. TGF-beta signaling alterations and susceptibility to colorectal cancer. *Human Molecular Genetics* 2007 Apr 15;**16**:R14-R20.
- (155) Minami Y, Kono T, Miyazaki T, Taniguchi T. The IL-2 receptor complex: its structure, function, and target genes. *Annu Rev Immunol* 1993;**11**:245-68.
- (156) Malek TR, Bayer AL. Tolerance, not immunity, crucially depends on IL-2. *Nature Reviews Immunology* 2004 Sep;**4**(9):665-74.

- (157) Grimm EA, Robb RJ, Roth JA, Neckers LM, Lachman LB, Wilson DJ, Rosenberg SA. Lymphokine-activated killer cell phenomenon. III. Evidence that IL-2 is sufficient for direct activation of peripheral blood lymphocytes into lymphokine-activated killer cells. *J Exp Med* 1983 Oct 1;**158**(4):1356-61.
- (158) Grimm EA, Mazumder A, Zhang HZ, Rosenberg SA. Lymphokine-activated killer cell phenomenon. Lysis of natural killer-resistant fresh solid tumor cells by interleukin 2-activated autologous human peripheral blood lymphocytes. *J Exp Med* 1982 Jun 1;**155**(6):1823-41.
- (159) Dutcher JP, Creekmore S, Weiss GR, Margolin K, Markowitz AB, Roper M, Parkinson D, Ciobanu N, Fisher RI, Boldt DH, Doroshow JH, Rayner AA, Hawkins M, Atkins M. A Phase-Ii Study of Interleukin-2 and Lymphokine-Activated Killer Cells in Patients with Metastatic Malignant-Melanoma. *Journal of Clinical Oncology* 1989 Apr;**7**(4):477-85.
- (160) Rosenberg SA, Mule JJ, Spiess PJ, Reichert CM, Schwarz SL. Regression of Established Pulmonary Metastases and Subcutaneous Tumor Mediated by the Systemic Administration of High-Dose Recombinant Interleukin-2. *Journal of Experimental Medicine* 1985;**161**(5):1169-88.
- (161) Parkinson DR, Abrams JS, Wiernik PH, Rayner AA, Margolin KA, Vanecho DA, Sznol M, Dutcher JP, Aronson FR, Doroshow JH, Atkins MB, Hawkins MJ. Interleukin-2 Therapy in Patients with Metastatic Malignant-Melanoma - A Phase-Ii Study. *Journal of Clinical Oncology* 1990 Oct;**8**(10):1650-6.

- (162) Rosenberg SA, Yang JC, Topalian SL, Schwartzentruber DJ, Weber JS, Parkinson DR, Seipp CA, Einhorn JH, White DE. Treatment of 283 Consecutive Patients with Metastatic Melanoma Or Renal-Cell Cancer Using High-Dose Bolus Interleukin-2. *Jama-Journal of the American Medical Association* 1994 Mar 23;**271**(12):907-13.
- (163) Tarhini AA, Kirkwood JM, Gooding WE, Cai C, Agarwala SS. Durable complete responses with high-dose bolus interleukin-2 in patients with metastatic melanoma who have experienced progression after biochemotherapy. *Journal of Clinical Oncology* 2007 Sep 1;**25**(25):3802-7.
- (164) Atkins MB, Kunkel L, Sznol M, Rosenberg SA. High-dose recombinant interleukin-2 therapy in patients with metastatic melanoma: Long-term survival update. *Cancer Journal from Scientific American* 2000 Feb;**6**:S11-S14.
- (165) Al-Ramadi BK, Fernandez-Cabezudo MJ, El-Hasasna H, Al-Salam S, Bashir G, Chouaib S. Potent anti-tumor activity of systemically-administered IL-2-expressing *Salmonella* correlates with decreased angiogenesis and enhanced tumor apoptosis. *Clinical Immunology* 2009 Jan;**130**(1):89-97.
- (166) Chada S, Cunningham C, Zhang Y, Su D, Mhashilkar A, Ekmekcioglu S, Grimm E, Wilson D, Merritt J, Coffee K, Nemunaitis J, Tong AW. INGN 241 (Ad-mda7) induces widespread apoptosis and activates the immune system in patients with advanced cancer. *Molecular Therapy* 2003 May;**7**(5):S446.

- (167) Radny P, Caroli UM, Bauer J, Paul T, Schlegel C, Eigentler TK, Weide B, Schwarz M, Garbe C. Phase II trial of intralesional therapy with interleukin-2 in soft-tissue melanoma metastases. *British Journal of Cancer* 2003 Nov 3;**89**(9):1620-6.
- (168) Garcia-Vazquez MD, Boyano MD, Canavate ML, Gardezabal J, de Galdeano AG, Lopez-Michelena T, Raton JA, Izu R, az-Ramon JL, az-Perez JL. Interleukin-2 enhances the growth of human melanoma cells derived form primary but not from metastatic tumours. *Eur Cytokine Netw* 2000 Dec;**11**(4):654-61.
- (169) Yasumura S, Lin WC, Weidmann E, Hebda P, Whiteside TL. Expression of Interleukin-2 Receptors on Human Carcinoma Cell-Lines and Tumor-Growth Inhibition by Interleukin-2. *International Journal of Cancer* 1994 Oct 15;**59**(2):225-34.
- (170) Weidmann E, Sacchi M, Plaisance S, Heo DS, Yasumura S, Lin WC, Johnson JT, Herberman RB, Azzarone B, Whiteside TL. Receptors for Interleukin-2 on Human Squamous-Cell Carcinoma Cell-Lines and Tumor Insitu. *Cancer Research* 1992 Nov 1;**52**(21):5963-70.
- (171) Sacchi M, Snyderman CH, Heo DS, Johnson JT, Damico F, Herberman RB, Whiteside TL. Local Adoptive Immunotherapy of Human Head and Neck-Cancer Xenografts in Nude-Mice with Lymphokine-Activated Killer-Cells and Interleukin-2. *Cancer Research* 1990 May 15;**50**(10):3113-8.
- (172) Sacchi M, Vitolo D, Sedlmayr P, Rabinowich H, Johnson JT, Herberman RB, Whiteside TL. Induction of Tumor-Regression in Experimental-Model of Human

- Head and Neck-Cancer by Human A-Lak Cells and Il-2. *International Journal of Cancer* 1991 Mar 12;**47**(5):784-91.
- (173) Miyahara R, Banerjee S, Kawano K, Efferson C, Tsuda N, Miyahara Y, Ioannides CG, Chada S, Ramesh R. Melanoma differentiation-associated gene-7 (mda-7)/interleukin (IL)-24 induces anticancer immunity in a syngeneic murine model. *Cancer Gene Ther* 2006 Aug;**13**(8):753-61.
- (174) Chada S, Mhashilkar AM, Ramesh R, Mumm JB, Sutton RB, Bocangel D, Zheng M, Grimm EA, Ekmekcioglu S. Bystander activity of Ad-mda7: human MDA-7 protein kills melanoma cells via an IL-20 receptor-dependent but STAT3-independent mechanism. *Mol Ther* 2004 Dec;**10**(6):1085-95.
- (175) Chen WY, Cheng YT, Lei HY, Chang CP, Wang CW, Chang MS. IL-24 inhibits the growth of hepatoma cells in vivo. *Genes Immun* 2005 Sep;**6**(6):493-9.
- (176) Pereno R, Giron-Michel J, Gaggero A, Gazes E, Meazza R, Monetti M, Monaco E, Mishal Z, Jasmin C, Indiveri F, Ferrini S, Azzarone B. IL-15/IL-15R alpha intracellular trafficking in human melanoma cells and signal transduction through the IL-15R alpha. *Oncogene* 2000 Oct 26;**19**(45):5153-62.
- (177) He YG, Mayhew E, Mellon J, Niederkorn JY. Expression and possible function of IL-2 and IL-15 receptors on human uveal melanoma cells. *Investigative Ophthalmology & Visual Science* 2004 Dec;**45**(12):4240-6.
- (178) Lin WC, Yasumura S, Suminami Y, Sung MW, Nagashima S, Stanson J, Whiteside TL. Constitutive Production of Il-2 by Human Carcinoma-Cells, Expression of Il-2

- Receptor, and Tumor-Cell Growth. *Journal of Immunology* 1995 Nov 15;**155**(10):4805-16.
- (179) Waldmann TA. The biology of interleukin-2 and interleukin-15: implications for cancer therapy and vaccine design. *Nature Reviews Immunology* 2006 Aug;**6**(8):595-601.
- (180) Waldmann TA, Tagaya Y. The multifaceted regulation of interleukin-15 expression and the role of this cytokine in NK cell differentiation and host response to intracellular pathogens. *Annu Rev Immunol* 1999;**17**:19-49.
- (181) Waldmann TA. IL-15 in the life and death of lymphocytes: immunotherapeutic implications. *Trends Mol Med* 2003 Dec;**9**(12):517-21.
- (182) Ugen KE, Kutzler MA, Marrero B, Westover J, Coppola D, Weiner DB, Heller R. Regression of subcutaneous B16 melanoma tumors after intratumoral delivery of an IL-15-expressing plasmid followed by in vivo electroporation. *Cancer Gene Therapy* 2006 Oct;**13**(10):969-74.
- (183) Fehniger TA, Cooper MA, Caligiuri MA. Interleukin-2 and interleukin-15: immunotherapy for cancer. *Cytokine & Growth Factor Reviews* 2002 Apr;**13**(2):169-83.
- (184) Chada S, Mhashilkar AM, Ramesh R, Mumm JB, Sutton RB, Bocangel D, Zheng M, Grimm EA, Ekmekcioglu S. Bystander activity of Ad-mda7: human MDA-7 protein kills melanoma cells via an IL-20 receptor-dependent but STAT3-independent mechanism. *Mol Ther* 2004 Dec;**10**(6):1085-95.

- (185) Karnitz LM, Burns LA, Sutor SL, Blenis J, Abraham RT. Interleukin-2 Triggers A Novel Phosphatidylinositol 3-Kinase-Dependent Mek Activation Pathway. *Molecular and Cellular Biology* 1995 Jun;**15**(6):3049-57.
- (186) Perkins GR, Marvel J, Collins MKL. Interleukin-2 Activates Extracellular Signal-Regulated Protein Kinase-2. *Journal of Experimental Medicine* 1993 Oct 1;**178**(4):1429-34.
- (187) Crawley JB, Rawlinson L, Lali FV, Page TH, Saklatvala J, Foxwell BMJ. T cell proliferation in response to interleukins 2 and 7 requires p38MAP kinase activation. *Journal of Biological Chemistry* 1997 Jun 6;**272**(23):15023-7.
- (188) Xu W, Yan M, Lu L, Sun L, Theze J, Zheng Z, Liu X. The p38 MAPK pathway is involved in the IL-2 induction of TNF-beta gene via the EBS element. *Biochem Biophys Res Commun* 2001 Dec 21;**289**(5):979-86.
- (189) Otkjaer K, Holtmann H, Kragstrup TW, Paludan SR, Johansen C, Gaestel M, Kragballe K, Iversen L. The p38 MAPK regulates IL-24 expression by stabilization of the 3' UTR of IL-24 mRNA. *PLoS One* 2010;**5**(1):e8671.
- (190) Suminami Y, Kashii Y, Law JC, Lin WC, Stanson J, Reichert TE, Rabinowich H, Whiteside TL. Molecular analysis of the IL-2 receptor beta chain gene expressed in human tumor cells. *Oncogene* 1998 Mar 12;**16**(10):1309-17.

Vita

Emily Jen was born in Lansing, Michigan in 1979. She moved to Houston, Texas in 1980. After graduating from Bellaire High School in Houston in 1998, she entered The University of Texas at Austin. She received the degree of Bachelor of Science with a major in Biochemistry in May 2002. She moved back to Houston and entered the combined M.D./Ph.D. program at The University of Texas Health Science Center at Houston/ M.D. Anderson Cancer Center in the summer of 2002. She will begin her residency in Pediatrics at The University of Texas Medical Branch in Galveston in July 2010 with the future goal of completing a fellowship and doing translational research in pediatric oncology.

NATURE PUBLISHING GROUP LICENSE TERMS AND CONDITIONS

May 02, 2010

This is a License Agreement between Emily Jen ("You") and Nature Publishing Group ("Nature Publishing Group") provided by Copyright Clearance Center ("CCC"). The license consists of your order details, the terms and conditions provided by Nature Publishing Group, and the payment terms and conditions.

All payments must be made in full to CCC. For payment instructions, please see information listed at the bottom of this form.

License Number	2416781462303
License date	Apr 26, 2010
Licensed content publisher	Nature Publishing Group
Licensed content publication	Nature Reviews Immunology
Licensed content title	Tolerance, not immunity, crucially depends on IL-2
Licensed content author	Thomas R. Malek, Allison L. Bayer
Volume number	
Issue number	
Pages	
Year of publication	2004
Portion used	Figures / tables
Number of figures / tables	1
Requestor type	Student
Type of Use	Thesis / Dissertation
Billing Type	Invoice
Company	Emily Jen
Billing Address	1515 Holcombe Department of Experimental Therapeutics Houston, TX 77030 United States
Customer reference info	
Total	0.00 USD
Terms and Conditions	

Terms and Conditions for Permissions

Nature Publishing Group hereby grants you a non-exclusive license to reproduce this material for this purpose, and for no other use, subject to the conditions below:

1. NPG warrants that it has, to the best of its knowledge, the rights to license reuse of this material. However, you should ensure that the material you are requesting is original to

Nature Publishing Group and does not carry the copyright of another entity (as credited in the published version). If the credit line on any part of the material you have requested indicates that it was reprinted or adapted by NPG with permission from another source, then you should also seek permission from that source to reuse the material.

2. Permission granted free of charge for material in print is also usually granted for any electronic version of that work, provided that the material is incidental to the work as a whole and that the electronic version is essentially equivalent to, or substitutes for, the print version. Where print permission has been granted for a fee, separate permission must be obtained for any additional, electronic re-use (unless, as in the case of a full paper, this has already been accounted for during your initial request in the calculation of a print run). NB: In all cases, web-based use of full-text articles must be authorized separately through the 'Use on a Web Site' option when requesting permission.
3. Permission granted for a first edition does not apply to second and subsequent editions and for editions in other languages (except for signatories to the STM Permissions Guidelines, or where the first edition permission was granted for free).
4. Nature Publishing Group's permission must be acknowledged next to the figure, table or abstract in print. In electronic form, this acknowledgement must be visible at the same time as the figure/table/abstract, and must be hyperlinked to the journal's homepage.
5. The credit line should read:

Reprinted by permission from Macmillan Publishers Ltd: [JOURNAL NAME]
(reference citation), copyright (year of publication)

For AOP papers, the credit line should read:

Reprinted by permission from Macmillan Publishers Ltd: [JOURNAL NAME],
advance online publication, day month year (doi: 10.1038/sj.[JOURNAL
ACRONYM].XXXXX)

6. Adaptations of single figures do not require NPG approval. However, the adaptation should be credited as follows:

Adapted by permission from Macmillan Publishers Ltd: [JOURNAL NAME]
(reference citation), copyright (year of publication)

7. Translations of 401 words up to a whole article require NPG approval. Please visit <http://www.macmillanmedicalcommunications.com> for more information. Translations of up to a 400 words do not require NPG approval. The translation should be credited as follows:

Translated by permission from Macmillan Publishers Ltd: [JOURNAL NAME]
(reference citation), copyright (year of publication).

We are certain that all parties will benefit from this agreement and wish you the best in the use of this material. Thank you.

v1.1

Gratis licenses (referencing \$0 in the Total field) are free. Please retain this printable license for your reference. No payment is required.

If you would like to pay for this license now, please remit this license along with your payment made payable to "COPYRIGHT CLEARANCE CENTER" otherwise you will be invoiced within 48 hours of the license date. Payment should be in the form of a check or money order referencing your account number and this invoice number RLNK10774409.

Once you receive your invoice for this order, you may pay your invoice by credit card. Please follow instructions provided at that time.

Make Payment To:
Copyright Clearance Center
Dept 001
P.O. Box 843006
Boston, MA 02284-3006

If you find copyrighted material related to this license will not be used and wish to cancel, please contact us referencing this license number 2416781462303 and noting the reason for cancellation.

Questions? customercare@copyright.com or +1-877-622-5543 (toll free in the US) or +1-978-646-2777.

**AMERICAN SOCIETY OF CLINICAL ONCOLOGY LICENSE
TERMS AND CONDITIONS**

May 02, 2010

This is a License Agreement between Emily Jen ("You") and American Society of Clinical Oncology ("American Society of Clinical Oncology") provided by Copyright Clearance Center ("CCC"). The license consists of your order details, the terms and conditions provided by American Society of Clinical Oncology, and the payment terms and conditions.

All payments must be made in full to CCC. For payment instructions, please see information listed at the bottom of this form.

License Number	2416810139111
License date	Apr 26, 2010
Licensed content publisher	American Society of Clinical Oncology
Licensed content publication	The Journal of Clinical Oncology
Licensed content title	Final Version of 2009 AJCC Melanoma Staging and Classification
Licensed content author	Charles M. Balch, Jeffrey E. Gershenwald, Seng-jaw Soong, John F. Thompson, Michael B. Atkins, David R. Byrd, Antonio C. Buzaid, Alistair J. Cochran, Daniel G. Coit, Shouluan Ding, Alexander M. Eggermont, Keith T. Flaherty, Phyllis A. Gimotty, John M. Kirkwood, Kelly M. McMasters, Martin C. Mihm, Jr, Donald L. Morton, Merrick I. Ross, Arthur J. Sober, Vernon K. Sondak
Licensed content date	Dec 1, 2009
Type of Use	Dissertation/Thesis
Geographic Rights	North American
Will you be translating?	No
Title of your thesis / dissertation	IL-2 REGULATES IL-24 PROTEIN EXPRESSION LEADING TO GROWTH SUPPRESSION OF MELANOMA
Expected completion date	May 2010
Estimated size(pages)	95
Billing Type	Invoice
Billing Address	1515 Holcombe Department of Experimental Therapeutics Houston, TX 77030 United States
Customer reference info	
Total	0.00 USD
Terms and Conditions	

General Terms & Conditions

Permission is granted upon the requester's compliance with the following terms and conditions:

1. A credit line will be prominently placed in your product(s) and include: for books-the author, book title, editor, copyright holder, year of publication; for journals-the author, title of article, title of journal, volume number, issue number, and the inclusive pages. The credit line must include the following wording: "Reprinted with permission. © 2008 American Society of Clinical Oncology. All rights reserved." The citation format must be as follows: Author last name, first initial et al: J Clin Oncol (or substitute appropriate title) Vol. (Issue), Year: Page-Page.

2. The requester warrants that the material shall not be used in any manner that may be derogatory to the title, content, or authors of the material or to ASCO, including but not limited to an association with (i) conduct that is fraudulent or otherwise illegal; or (ii) the use or abuse of alcohol, cigarettes, or illegal drugs.

3. Permission is granted for the term (for Books/CDs-Shelf Life; for Internet/Intranet-In perpetuity; for all other forms of print-the life of the title) and purpose specified in your request. Once term has expired, permission to renew must be made in writing.

4. Permission granted is nonexclusive, and is valid throughout the world in English and the languages specified in your original request. A new permission must be requested for revisions of the publication under current consideration.

5. ASCO cannot supply the requester with the original artwork or a "clean copy."

6. If the ASCO material is to be translated, the following lines must be included: The authors, editors, and ASCO are not responsible for errors or omissions in translations.

v1.2

Gratis licenses (referencing \$0 in the Total field) are free. Please retain this printable license for your reference. No payment is required.

If you would like to pay for this license now, please remit this license along with your payment made payable to "COPYRIGHT CLEARANCE CENTER" otherwise you will be invoiced within 48 hours of the license date. Payment should be in the form of a check or money order referencing your account number and this invoice number RLNK10774429.

Once you receive your invoice for this order, you may pay your invoice by credit card. Please follow instructions provided at that time.

**Make Payment To:
Copyright Clearance Center
Dept 001
P.O. Box 843006
Boston, MA 02284-3006**

If you find copyrighted material related to this license will not be used and wish to cancel, please contact us referencing this license number 2416810139111 and noting the reason for cancellation.

Questions? customercare@copyright.com or +1-877-622-5543 (toll free in the US) or +1-978-646-2777.