

Journal of Family Strengths

Volume 3 | Issue 1

Article 2

December 2011

Front Matter

Follow this and additional works at: <https://digitalcommons.library.tmc.edu/jfs>

Recommended Citation

(2011) "Front Matter," *Journal of Family Strengths*: Vol. 3 : Iss. 1 , Article 2.

Available at: <https://digitalcommons.library.tmc.edu/jfs/vol3/iss1/2>

The *Journal of Family Strengths* is brought to you for free and open access by CHILDREN AT RISK at DigitalCommons@The Texas Medical Center. It has a "cc by-nc-nd" Creative Commons license" (Attribution Non-Commercial No Derivatives) For more information, please contact digitalcommons@exch.library.tmc.edu



FAMILY PRESERVATION JOURNAL

A Publication of the *Family Preservation Institute*

Volume 3 Issue 1 1998

ARTICLES

The Role of Consistency and Diversity in Building Knowledge in Family Preservation

Debora J. Cavazon Dylla and Marianne Berry

The Weekly Adjustment Indicators Checklist: An Application in the Child Welfare Field

*Michael H. Epstein, Madhavi Jayanthi, Janet McKelvey, Deborah Holderness,
Erin Frankenberry, Cassandra Lampkin, Molly McGrath, and Kari White*

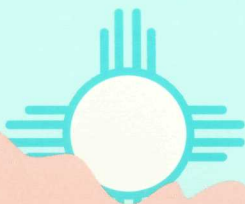
Intensive Family Preservation Services: A Short History but a Long Past

Kellie B. Reed and Raymond S. Kirk

Collaborative Conversations for Change: A Solution-Focused Approach to Family Centered Practice

Donald F. Fausel

PLUS a review of current resources



FAMILY PRESERVATION INSTITUTE

Department of Social Work
New Mexico State University
Box 30001, Department 3SW
Las Cruces, New Mexico 88003-8001

eddie bowers publishing, inc.
2600 Jackson Street
Dubuque, Iowa 52001-3342

Acknowledgment

A special thanks for the very attractive cover design goes to Jean Conway at the Center for Education Development, New Mexico State University.

eddie bowers publishing, inc.
2600 Jackson Street
Dubuque, Iowa 52001-3342

ISSN 1085-0430

Copyright © 1998, by *eddie bowers publishing, inc.*

All rights reserved. No part of this publication may be reproduced, stored in a retrieval system, or transmitted, in any form or by any means, electronic, mechanical, photocopy, recording or otherwise, without the prior written permission of *eddie bowers publishing, inc.*

Printed in the United States of America

FAMILY PRESERVATION JOURNAL

Volume 3 Issue 1 1998

SPECIAL FEATURES

Editorial

Alvin L. Sallee and Shawna Alexander

vi

ARTICLES

The Role of Consistency and Diversity in Building
Knowledge in Family Preservation

Debora J. Cavazos Dylla and Marianne Berry

1

The Weekly Adjustment Indicators Checklist:
An Application in the Child Welfare Field

*Michael H. Epstein, Madhavi Jayanthi, Janet McKelvey,
Deborah Holderness, Erin Frankenberry,
Cassandra Lampkin, Molly McGrath, and Kari White*

23

Intensive Family Preservation Services: A Short
History but a Long Past

Kellie B. Reed and Raymond S. Kirk

41

Collaborative Conversations for Change: A Solution-
Focused Approach to Family Centered Practice

Donald F. Fausel

59

CURRENT RESOURCES

Social Work Practice with Children

Nancy Boyd Webb. New York: The Guilford Press.

Reviewed by Lois Wright

76

Opinions expressed in this journal are those of the authors and do not necessarily reflect the position of the Family Preservation Institute or New Mexico State University.

Editorial Board

Editor

Alvin L. Sallee, *New Mexico State University*

Co-Editors

Marianne Berry, *The University of Texas at Arlington*

John Ronnau, *University of Utah*

Board Members

Rafael Aguirre, *Texas Tech University*

Sharon Alpert, *Harris County Children's Protective Services*

Richard P. Barth, *University of California at Berkeley*

Gale Burford, *Memorial University of Newfoundland*

Karl W. Dennis, *Kaleidoscope, Inc.*

Antonia Dobrec, *Three Feathers Association*

Al Durham, *U.S. Department of Health and Human Services*

Rowena Fong, *University of Hawaii at Manoa*

Robert S. Friedman, *Maryland Department of Human Resources*

Barbara J. Friesen, *Portland State University*

Ann Hartman, *Smith College School for Social Work*

Carla Jensen, *University of Wisconsin at Milwaukee*

Dana Klar, *Washington University*

Miriam J. Landsman, *The University of Iowa*

Guadalupe G. Lara, *Children's Hospital of Michigan*

Shelley Leavitt, *Behavioral Sciences Institute*

Elaine LeVine, *The Center through the Looking Glass*

June Lloyd, *U.S. Department of Health and Human Services*

Harry J. Macy, *Ball State University*

Anthony N. Maluccio, *Boston College*

William Meezan, *University of Southern California*

Gay Munsell, *University of Oklahoma*

Kristine Nelson, *Portland State University*

Theodora Ooms, *Family Impact Seminar*

Juan Paz, *Arizona State University*

Peter J. Pecora, *The Casey Family Program and University of Washington*

John Poertner, *University of Illinois*

Twila Ross, *DePelchin Children's Center*

Patricia Sandau-Beckler, *New Mexico State University*

Elizabeth Tracy, *Case Western Reserve University*

Gerald Vest, *New Mexico State University*

Esther Wattenberg, *University of Minnesota*

Susan Whitelaw Downs, *Wayne State University*

Lois W. Wright, *University of South Carolina*

General Information

Manuscripts

The *Family Preservation Journal* is a refereed biannual publication. Practitioners, policy makers, evaluators, administrators, and educators are invited to submit articles. Manuscripts should conform to APA style, with an optimal length of 18 pages, not to exceed 25 typed, double-spaced pages (excluding tables and figures), with an alphabetical list of references. Also include a diskette copy using WordPerfect v 5.1 or v 6.1 for PC.

Provide five copies of the manuscripts. the title page only should list the author's name, affiliation, address, and telephone number. The author's name must not appear after the title page; only the title

should appear on the abstract and first page of the text. Include an abstract of about 100 words.

Please submit all materials to **Family Preservation Journal**, Department of Social Work, New Mexico State University, P.O. Box 30001 Dept. 3SW, Las Cruces, NM 88003-8001.

Subscriptions

Subscription rates are \$30.00 per year for individuals and \$60.00 for institutions. Make checks payable to *Eddie Bowers Publishing, Inc.* and send to *Eddie Bowers Publishing, Inc., 2600 Jackson St., Dubuque, IA 52001*. For further information about subscriptions, please call 1-800-747-2411.